

PRINCIPAL PARTICULARS

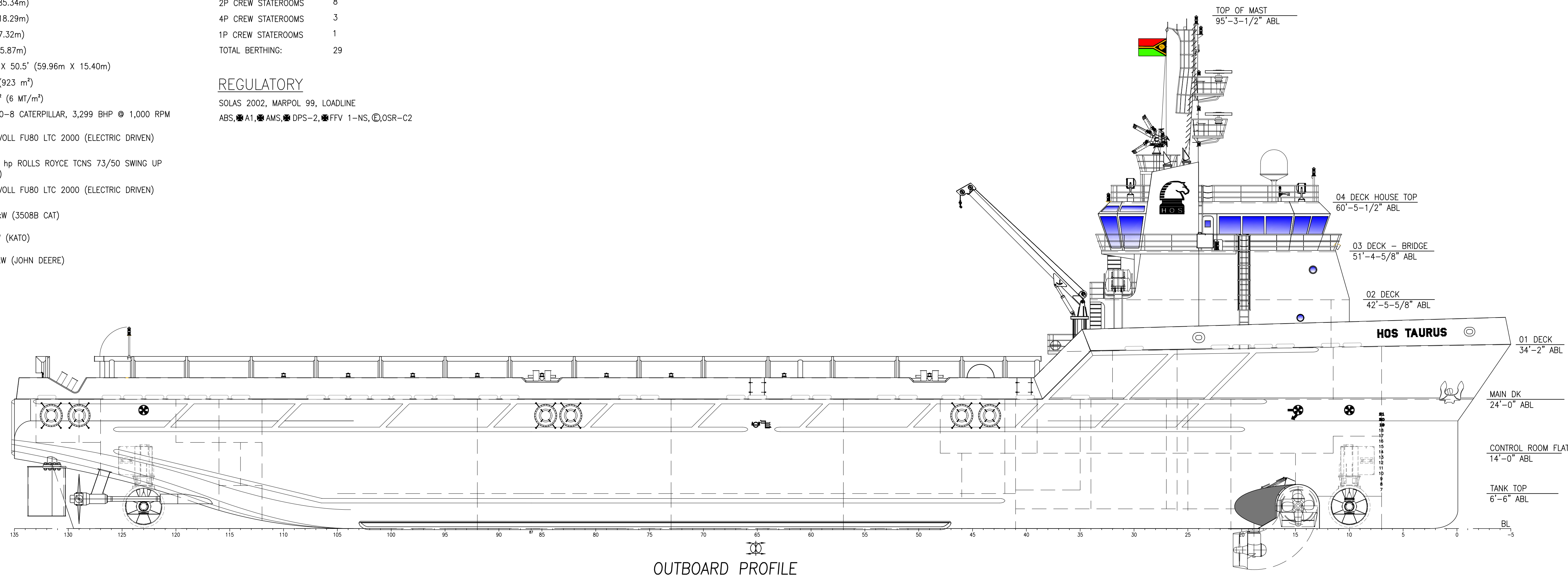
LOA	280'-0" (85.34m)
BREADTH	60'-0" (18.29m)
DEPTH	24'-0" (7.32m)
DRAFT (LOADLINE)	19.25' (5.87m)
CLEAR DECK CARGO SPACE	196'-8.5" X 50.5' (59.96m X 15.40m)
CLEAR DECK CARGO AREA	9,934 ft ² (923 m ²)
CARGO DECK RATING	1,200 lb/ft ² (6 MT/m ²)
MAIN PROPULSION	(2) X C280-8 CATERPILLAR, 3,299 BHP @ 1,000 RPM EACH
BOW THRUSTER-TUNNEL	1 X BRUNNOLL FU80 LTC 2000 (ELECTRIC DRIVEN) 1,676 hp
BOW THRUSTER-SWING	1 X 1,150 hp ROLLS ROYCE TCNS 73/50 SWING UP (3508 CAT)
STERN THRUSTER-TUNNEL	1 X BRUNNOLL FU80 LTC 2000 (ELECTRIC DRIVEN) 1,676 hp
SHIPS SERVICE DIESEL GENERATOR	2 X 910 kW (3508B CAT)
SHAFT GENERATOR FOR ELECTRIC THRUSTERS	2 X 2 mW (KATO)
EMERGENCY DIESEL GENERATOR	1 X 166 kW (JOHN DEERE)

ACCOMMODATIONS

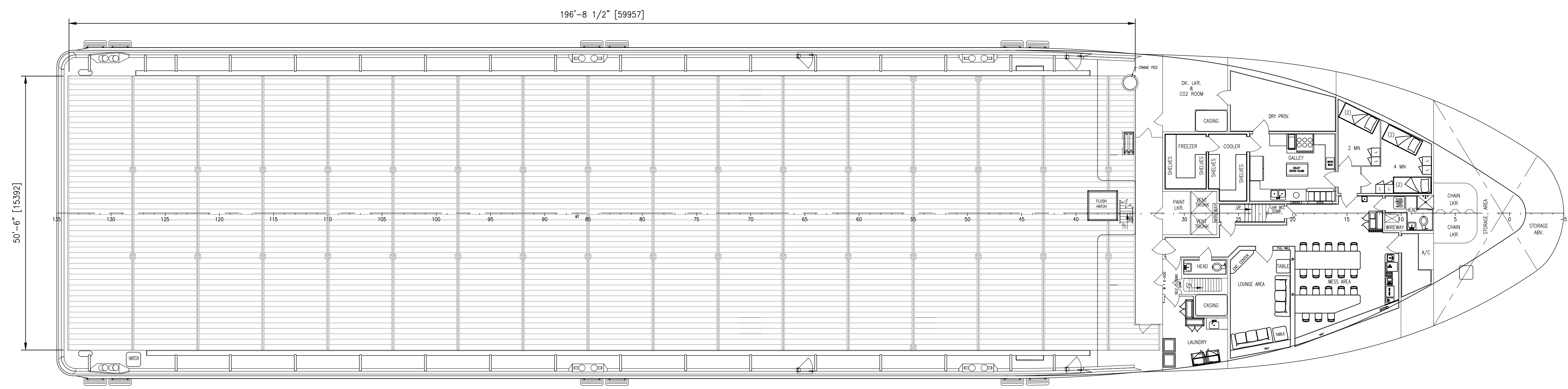
2P CREW STATEROOMS	8
4P CREW STATEROOMS	3
1P CREW STATEROOMS	1
TOTAL BERTHING:	29

REGULATORY

SOLAS 2002, MARPOL 99, LOADLINE
 ABS, A1, AMS, DPS-2, FFV 1-NS, OSR-C2



OUTBOARD PROFILE



MAIN DECK PLAN
24'-0" ABL

HOSMAX 280 / HOS TAURUS

THIS DRAWING, DESIGN CONCEPT AND SPECIFICATIONS ARE THE PROPERTY OF HORNBECK OFFSHORE SERVICES AND ARE FURNISHED ON A CONFIDENTIAL BASIS WITH AN EXPRESSED UNDERSTANDING THAT THEY WILL NOT BE COPIED IN ANY MANNER USED FOR MANUFACTURE, SOLD, TRANSFERRED, NOR USED TO THE DETRIMENT OF SAID FIRM WITHOUT WRITTEN PERMISSION.

HORNBECK OFFSHORE SERVICES

DRAWN BY: S. MAUL	280'-0" X 60'-0" X 24'-0"			SIZE D
CHECKED BY: M. STANSBURY	OUTBOARD PROFILE & GENERAL ARRANGEMENT			REV. 2
APPROVED BY: J. GUIDRY	TASK No. 7582	DRAWING No. 1,001	SCALE: 3/32"=1'-0" DATE: 05/10/23	SHEET 1 OF 3

PLN: 4/12/2024 2:33 PM
 Dwg: 261114
 SHEET: AMB 8 2254

16

15

14

13

12

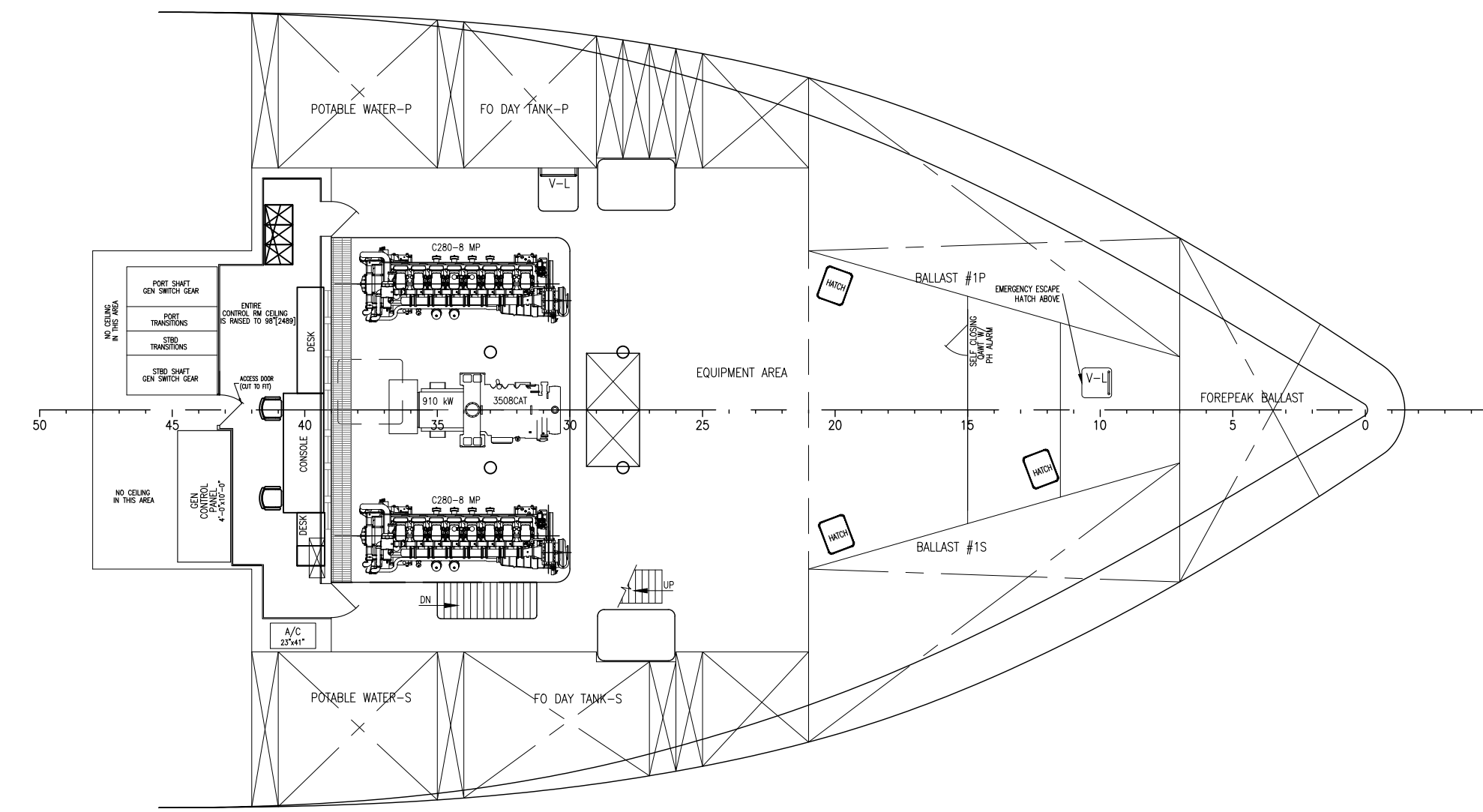
11

10

9

D

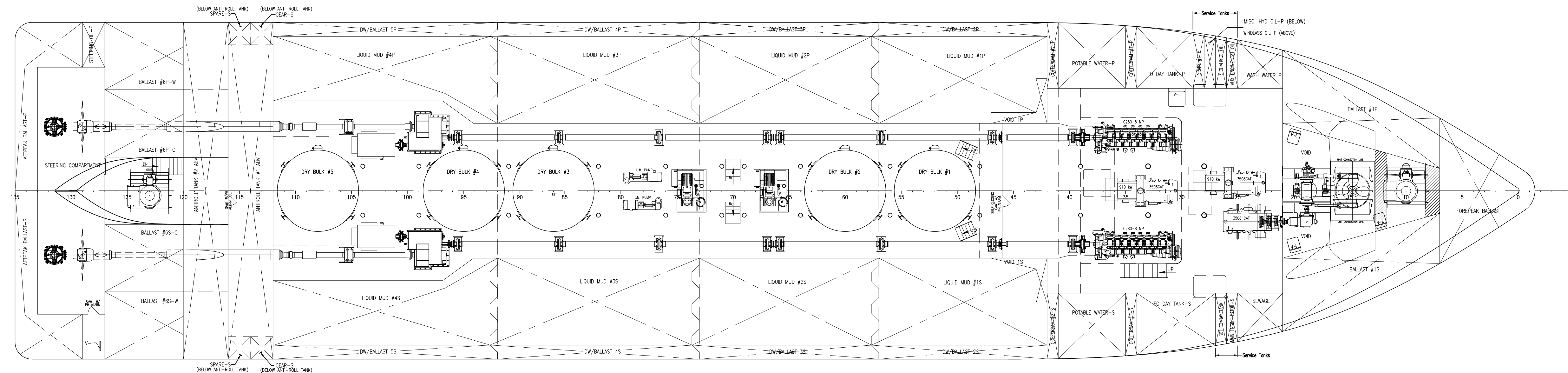
D



CONTROL ROOM FLAT
14'-0" ABL

C

C



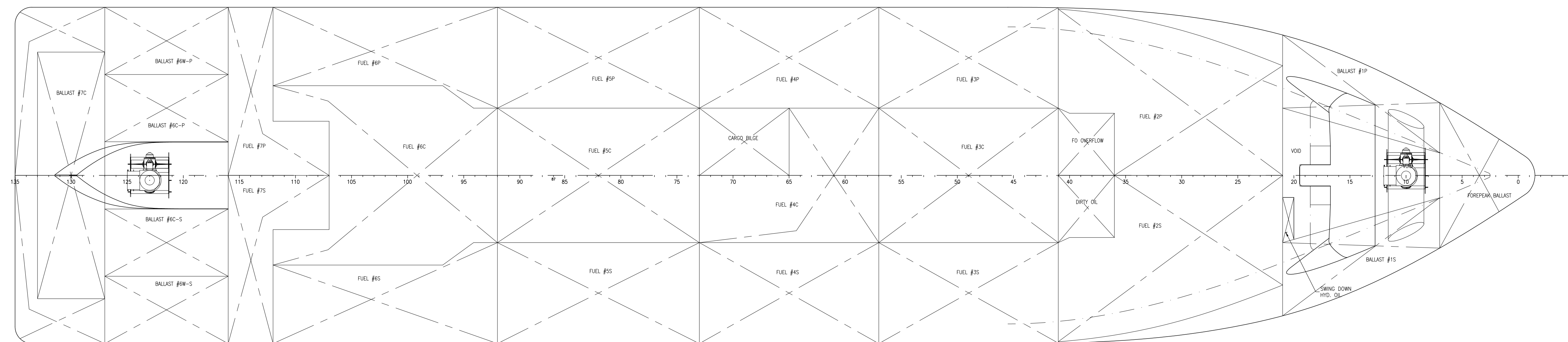
ABOVE TANK TOP PLAN

B

B

A

A



TANK TOP

THIS DRAWING, DESIGN CONCEPT AND SPECIFICATIONS ARE THE PROPERTY OF HORNBECK OFFSHORE SERVICES AND ARE FURNISHED ON A CONFIDENTIAL BASIS WITH AN EXPRESSED UNDERSTANDING THAT THEY WILL NOT BE COPIED IN ANY MANNER USED FOR MANUFACTURING, SALES, TRANSPORTATION, NOR USED TO THE DETRIMENT OF SAID FIRM WITHOUT WRITTEN PERMISSION.

HORNBECK OFFSHORE SERVICES

OUTBOARD PROFILE & GENERAL ARRANGEMENT		SIZE
TASK No. 7582	DRAWING No. 1.001	D
HULL No. 238	SY: NAS	REV. 2
SCALE: 3/32"=1'-0"		
DATE: 05/10/23		
SHEET 2 OF 3		

16

15

14

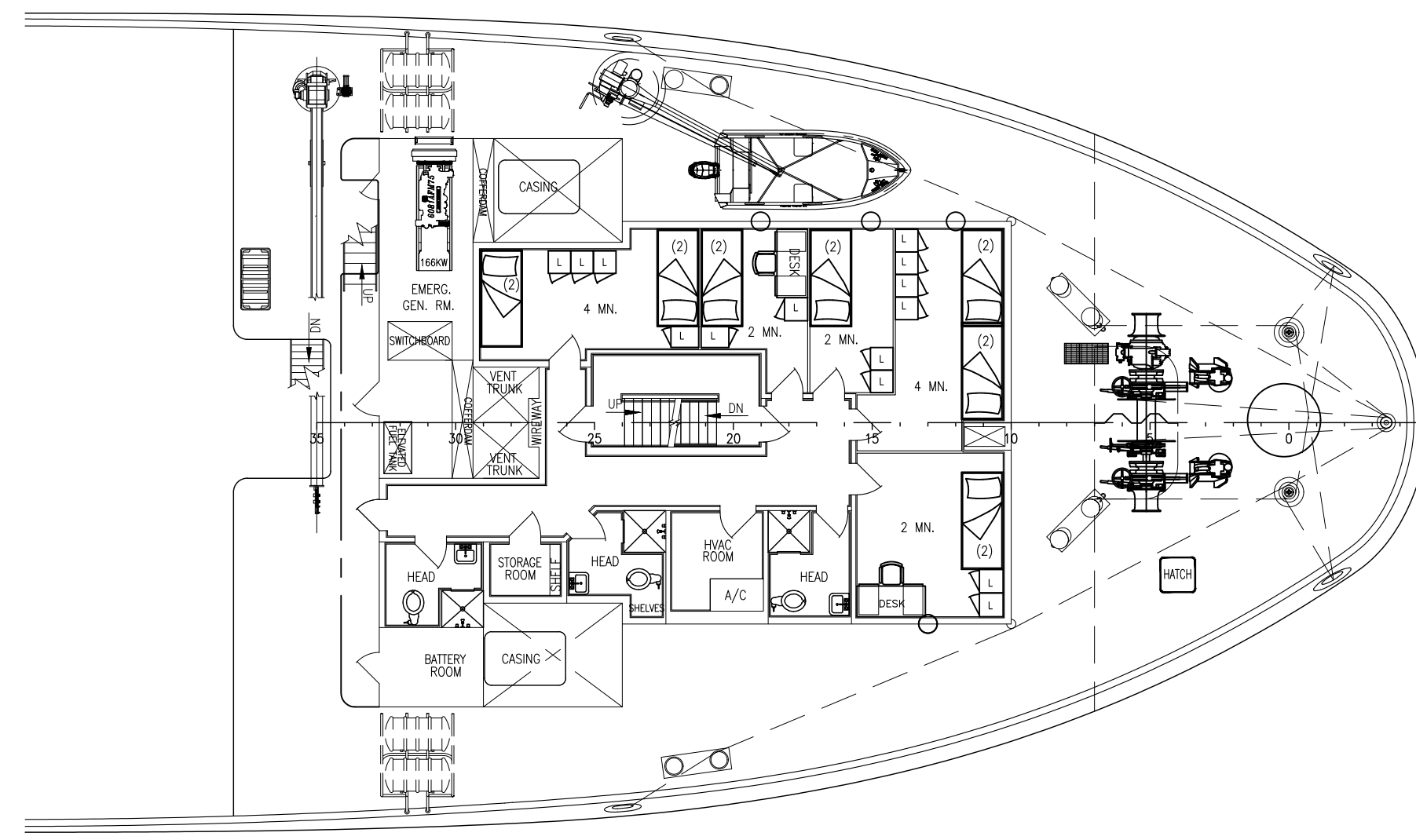
13

12

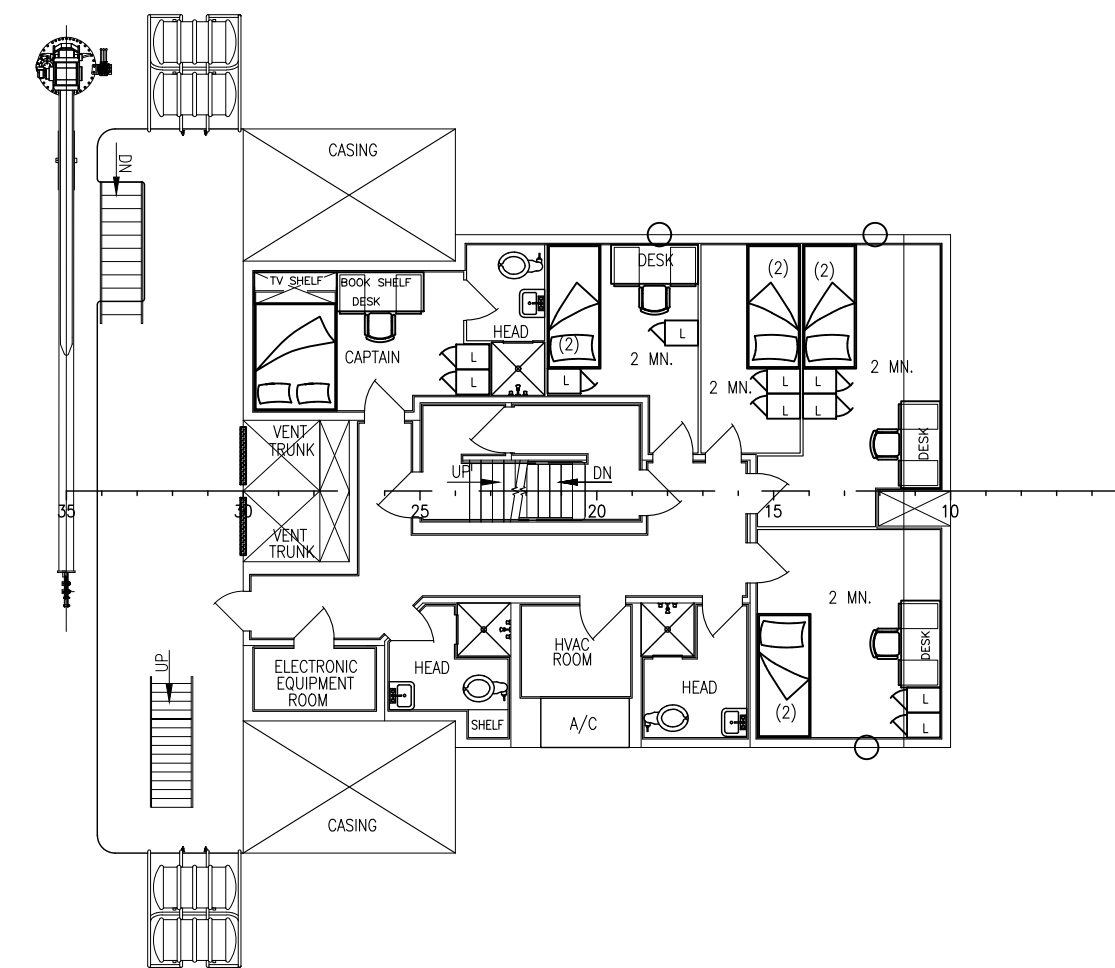
11

10

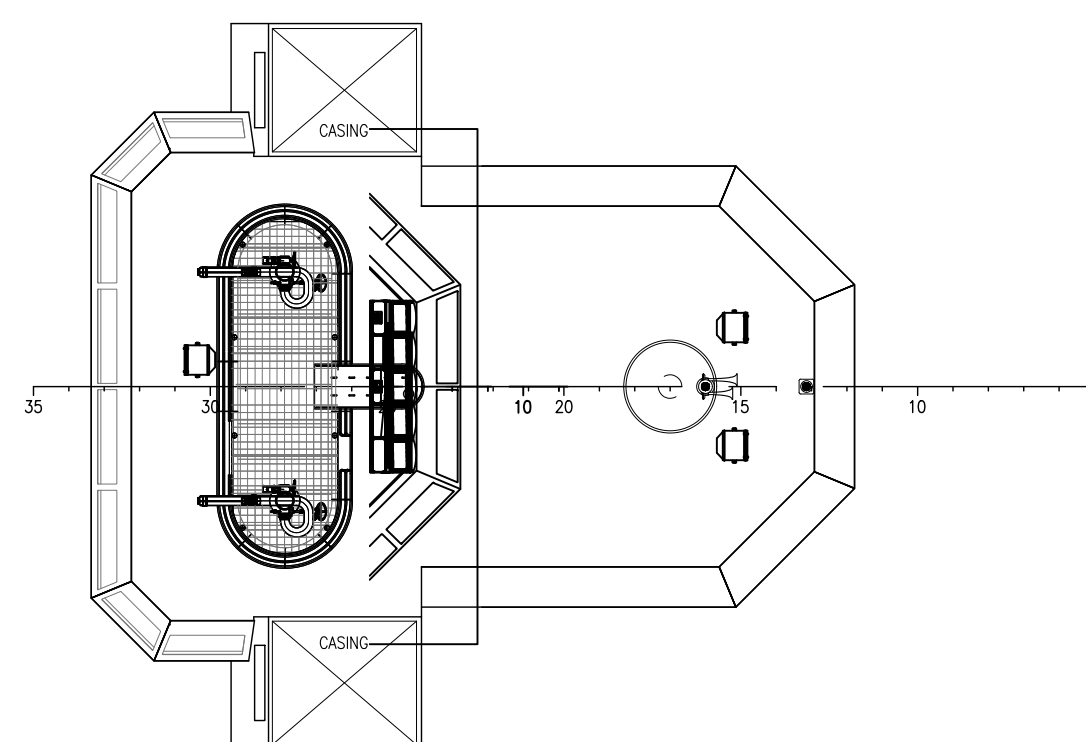
9



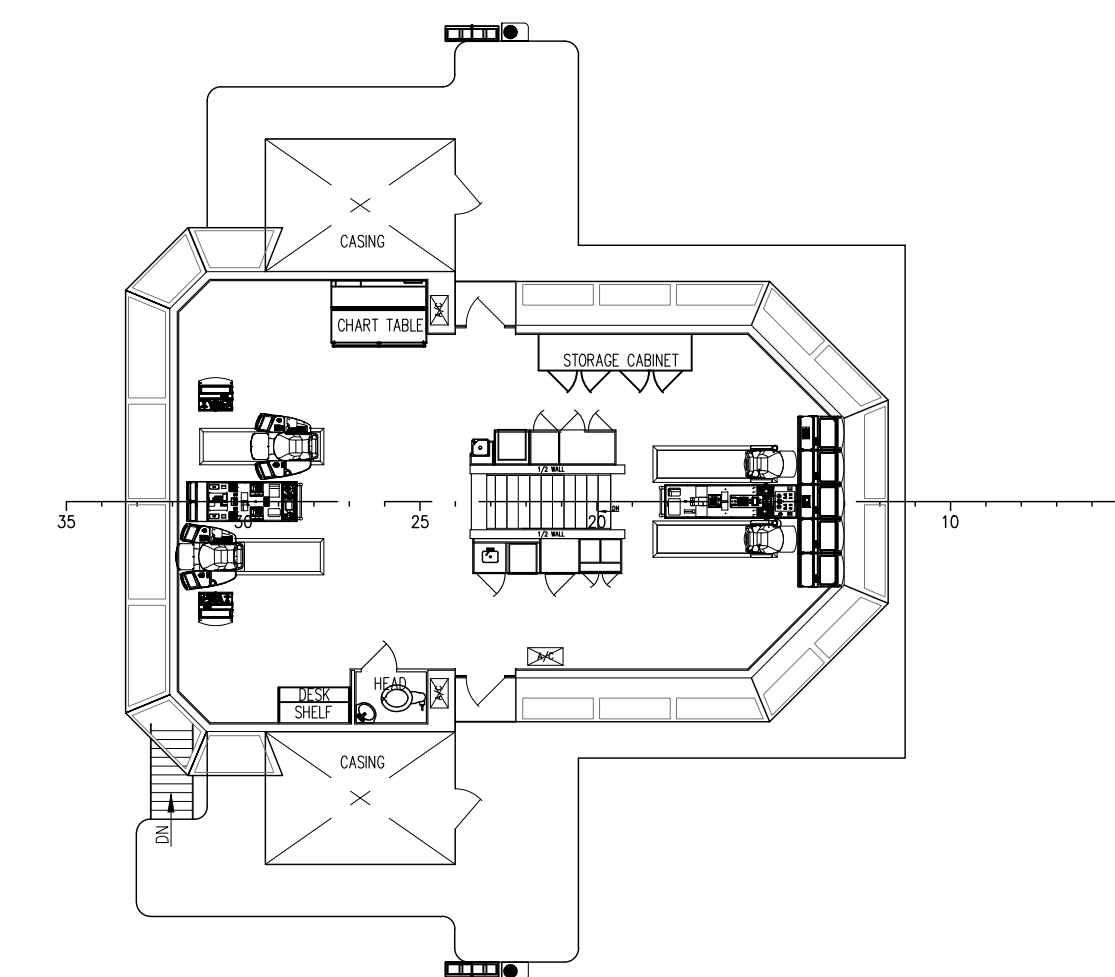
01 DECK PLAN
34'-2" ABL (@ FR5)



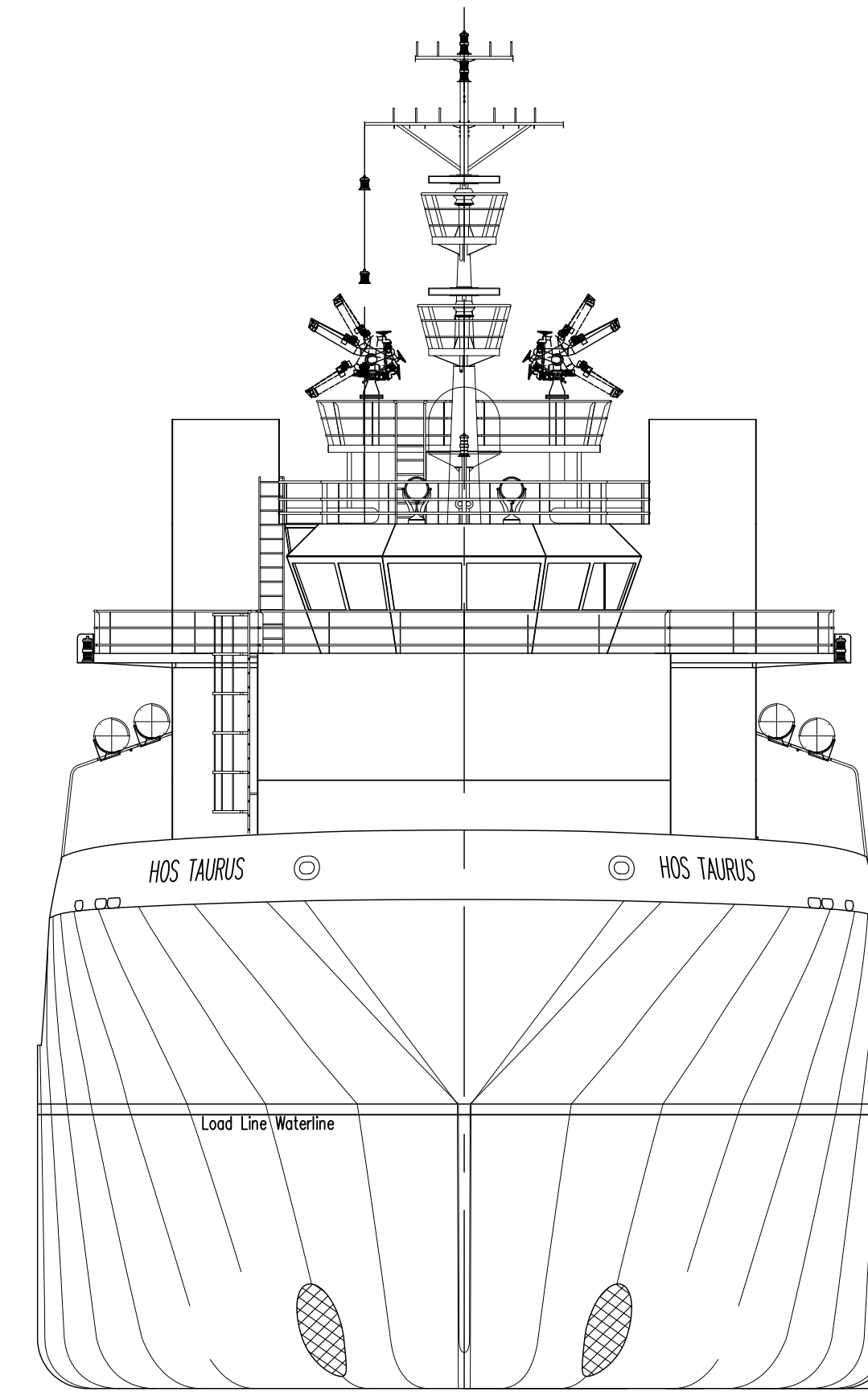
02 DECK PLAN
42'-5 5/8" ABL



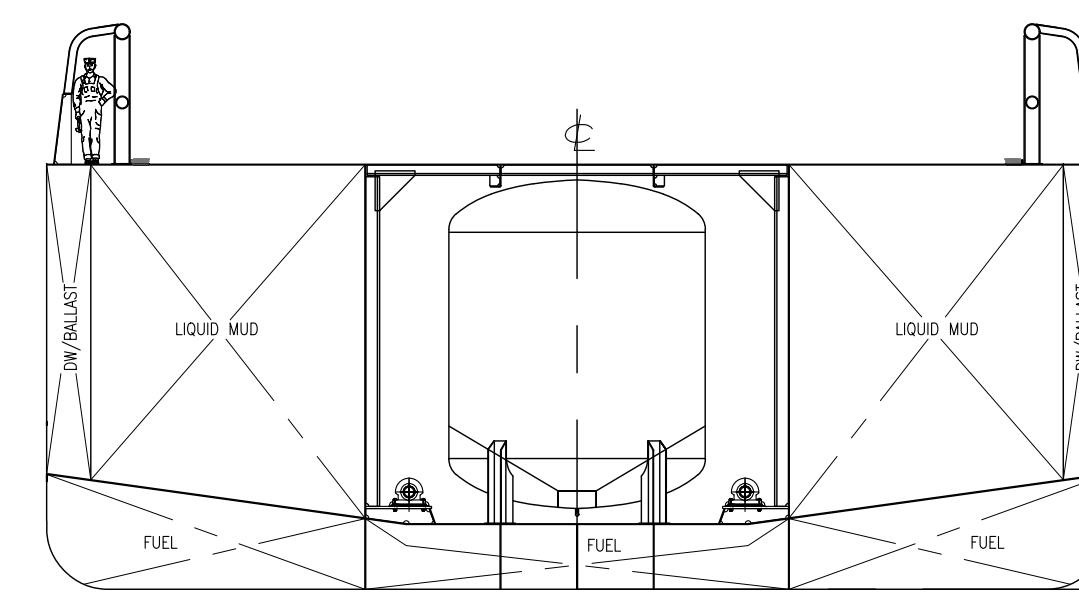
04 DECK PLAN
TOP OF HOUSE - 60'-5 1/2" ABL



03 DECK PLAN
BRIDGE - 51'-4 5/8" ABL



BOW PROFILE
LOOKING AFT



CARGO AREA SECTION
APPROX. FR85

	<small>THIS DRAWING, DESIGN CONCEPT AND SPECIFICATIONS ARE THE PROPERTY OF HORNBECK OFFSHORE SERVICES AND ARE FURNISHED ON A CONFIDENTIAL BASIS WITH AN EXPRESSED UNDERSTANDING THAT THEY WILL NOT BE COPIED IN ANY MANNER USED FOR MANUFACTURING, SOLD, TRANSFERRED, NOR USED TO THE DETRIMENT OF SAID FIRM WITHOUT WRITTEN PERMISSION.</small>			OUTBOARD PROFILE & GENERAL ARRANGEMENT SIZE D
	TASK No.	DRAWING No.	SCALE: 3/32"=1'-0"	
	7582	1.001	DATE: 05/10/23	
	HULL No. 238	SY: NAS	SHEET 3 OF 3	

HORNBECK OFFSHORE SERVICES