

**PRINCIPAL PARTICULARS**

LOA 292'-0"  
 LBP - LWL 280'-0"  
 BEAM OVERALL 76'-0"  
 DEPTH 24'-6"  
 LOADLINE DRAFT 19'-6" APPROX.  
 DEADWEIGHT 4,100 LT  
 GENERATORS (4) X 1825KW @ 1,800 RPM (WATER-COOLED)  
 TOTAL KILOWATTS 7,300 KW @ 690 VAC  
 MAIN PROPULSION (2) X 2,500KW @ 620 VAC @ 1,000 RPM (6,704HP TOTAL) FIXED PITCH VFD Z-DRIVE IN NOZZLES  
 BOW THRUSTERS (2) X 1,180 KW @ 620 VAC @ 1,200 RPM (3,164HP TOTAL) FIXED PITCH VFD/REVERSING MOTORS  
 STORES CRANE 13mT @ 5m  
 MISSION CRANE (MAIN) 35 MT @ 9.68M (31.75 FT), 10 MT @ 29.87M (98 FT)  
 MISSION CRANE (AUX.) 7.5 MT @ 11.42M (37.46 FT), 7.5 MT @ 31.17M (102.25 FT)  
 REGULATORY USCG SUB I & L /SOLAS/ABS A1, OFFSHORE SERVICE VESSEL, AMS, DPS-2, ENVIRO  
 ACCU, UWILD, HELIDK, FiFi 1, CRC.

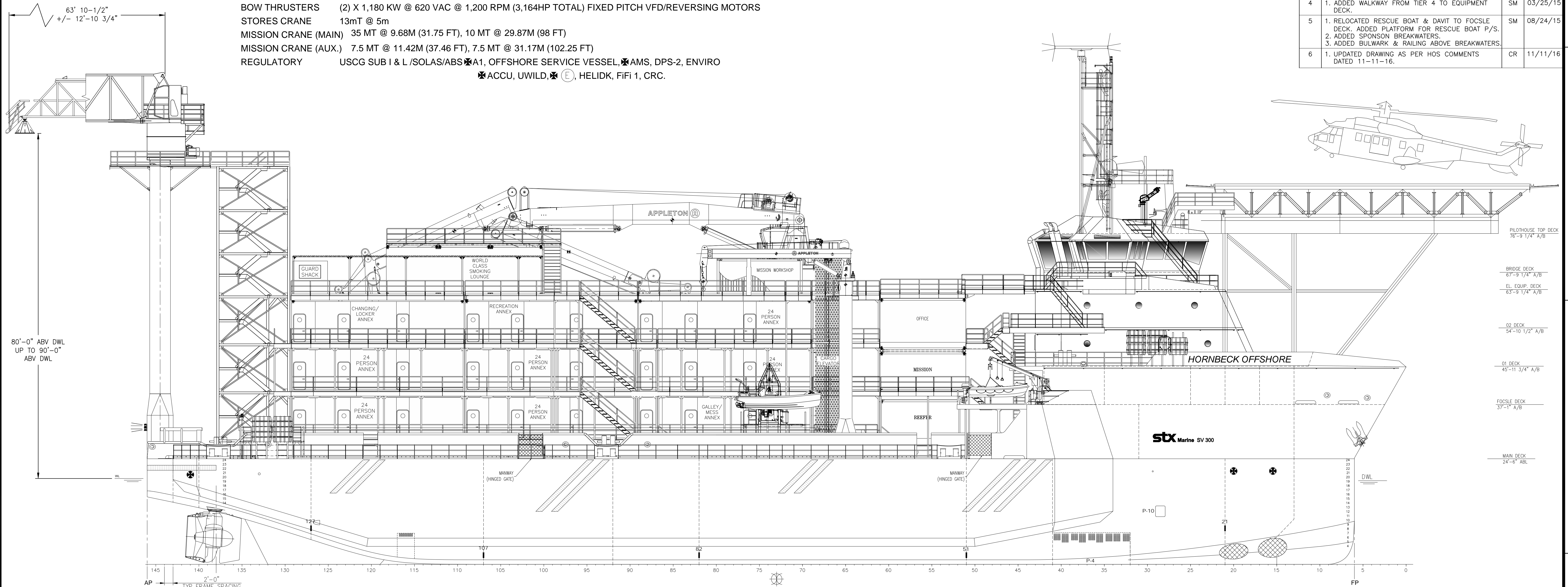
**TANK CAPACITIES**

WATER BALLAST 551,566 US GAL (98% FILL)  
 TOTAL FUEL OIL 236,318 US GAL (98% FILL)  
 SHIP'S FUEL OIL 20,554 US GAL (98% FILL)  
 POTABLE WATER 136,771 US GAL (98% FILL)  
 SEWAGE (P) 21,254 US GAL (98% FILL)  
 GREY WATER (S) 21,254 US GAL (98% FILL)  
 BLACK/GREY WATER 80,427 US GAL (98% FILL)

**ACCOMMODATIONS SUMMARY TABLE**

ACCOMMODATIONS 194 (CREW & IND PERSONS)  
 STATEROOMS 53  
 HEADS 59  
 LAUNDRY AREA 2  
 GALLEY 2  
 MESS AREA 2  
 SICK BAY 1

REVISIONS			
REV	DESCRIPTION	BY	DATE
0	REVISIONS FROM PREL. DWG TO REV 0. 1. REVISED DRAWING LAYOUT AND REARRANGED VIEWS. 2. ADDED VESSEL SECTION VIEW AT FR. 41. 3. ADDED SPONSONS TO VESSEL. 4. RELOCATED POTABLE WATER & BLACK/GREY WATER TANK TO AFT OF FR. 92 AND REVISED CAPACITIES. 5. REARRANGED TANK FARM EQUIPMENT LAYOUT TO SHOW NEW FiFi DELUGE PUMP, AFFP PUMP AND OTHER EQUIP. 6. RELOCATED FRC FROM PORT SIDE TO STD. SIDE. 7. SWAPPED REC. ANNEX WITH THIRD TIER 24 MAN ANNEX. 8. REVISED FOCSLC DK LAYOUT FOR MESS, THEATER, STORE LKR AND Co2 ROOM. 9. ADDED GUARD SHACK ON TOP OF THIRD TIER ANNEX. 10. ADDED LUGGAGE LANDING AREA AND HELI RESTART UNIT TO PILOT HOUSE TOP DECK.	KK	10/17/14
1	1. ADDED YOKOHAMA FENDERS TO MAIN DECK & PROFILE VIEWS. 2. UPDATED APPLETON CRANE PER OWNERS REQUEST.	SM	11/17/14
2	1. UPDATED APPLETON CRANE PER OWNERS REQUEST.	SM	11/24/14
3	1. ADJUSTED GANGWAY TO SHOW 80'-0" ABV DWL.	SM	12/03/14
4	1. ADDED WALKWAY FROM TIER 4 TO EQUIPMENT DECK.	SM	03/25/15
5	1. RELOCATED RESCUE BOAT & DAVIT TO FOCSLC DECK. ADDED PLATFORM FOR RESCUE BOAT P/S. 2. ADDED SPONSON BREAKWATERS. 3. ADDED BULWARK & RAILING ABOVE BREAKWATERS.	SM	08/24/15
6	1. UPDATED DRAWING AS PER HOS COMMENTS DATED 11-11-16.	CR	11/11/16



**OUTBOARD PROFILE**

**HOSMAX 300 FCSV**

THIS DRAWING, DESIGN CONCEPT AND SPECIFICATIONS ARE THE PROPERTY OF HORNBECK OFFSHORE SERVICES AND ARE FURNISHED ON A CONFIDENTIAL BASIS WITH AN EXPRESSED UNDERSTANDING THAT THEY WILL NOT BE COPIED, IN ANY MANNER USED FOR MANUFACTURE, SOLD, TRANSFERRED, NOR USED TO THE DETRIMENT OF SAID FIRM WITHOUT WRITTEN PERMISSION.

**HORNBECK OFFSHORE SERVICES**

DRAWN BY: SLD  
 CH'KD. BY: K.K  
 APP'D. BY: [Signature]

292'-0" X 76'-0" X 24'-6"

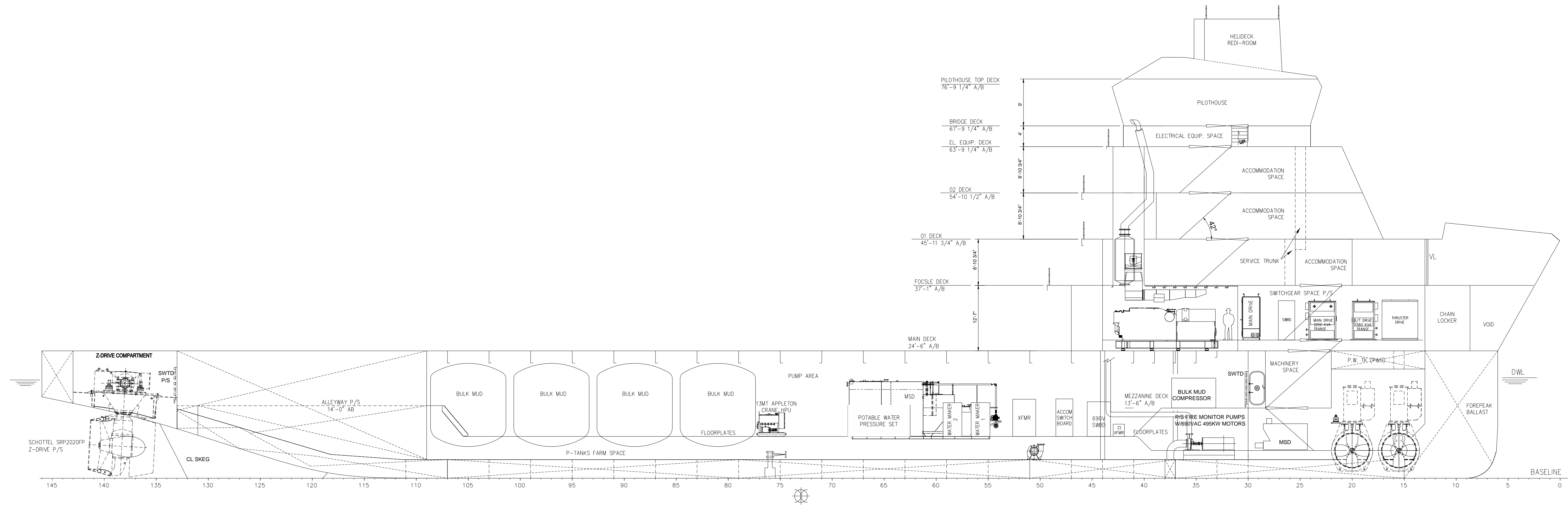
GENERAL ARRANGEMENT & OUTBOARD PROFILE

SCALE: 3/32"=1'-0"  
 DRAWING # 1.001  
 TASK # 6207 (TAI 1137H)

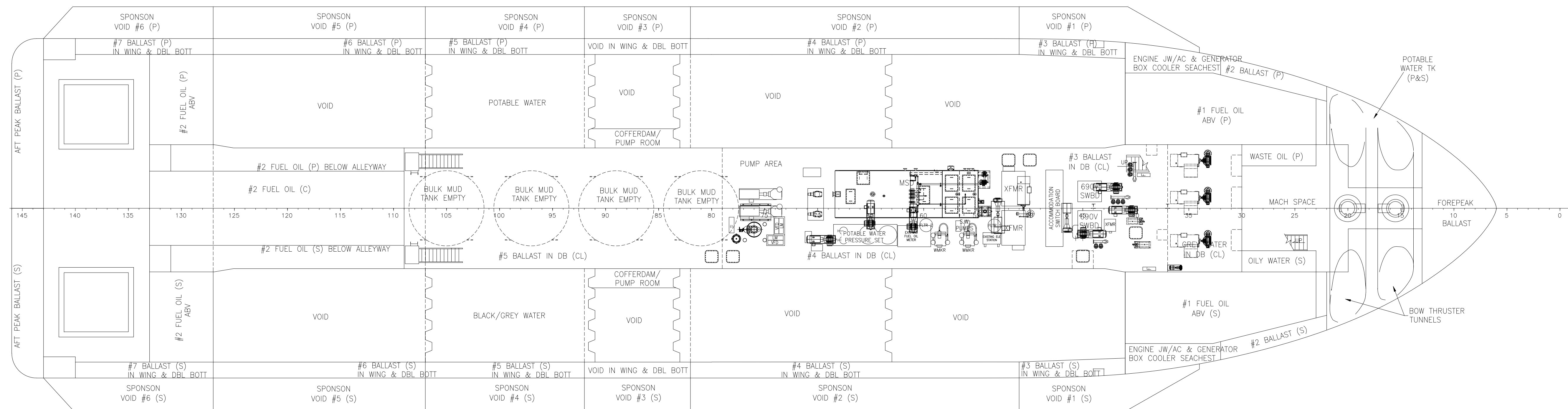
DATE: 06-2-2014  
 HULL # 204  
 SHEET 1 OF 6

REV: 6

TECHNOLOGY ASSOCIATES, INC.  
 NAVAL ARCHITECTS-MARINE ENGINEERS-MARITIME SOLUTIONS  
 NEW ORLEANS, LA (USA)  
 www.NovalArchitects.US




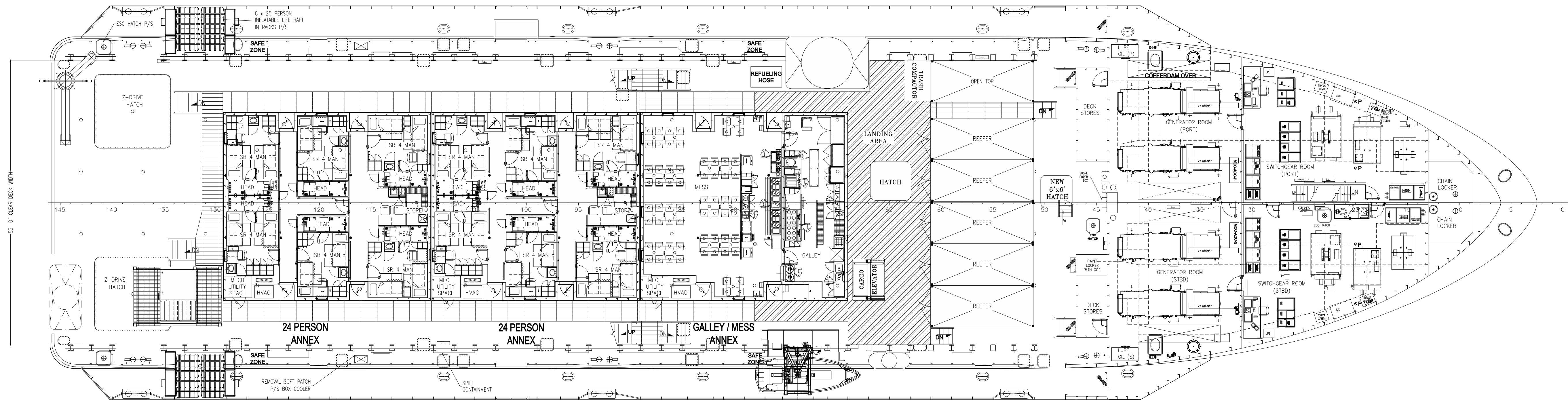
**INBOARD PROFILE**



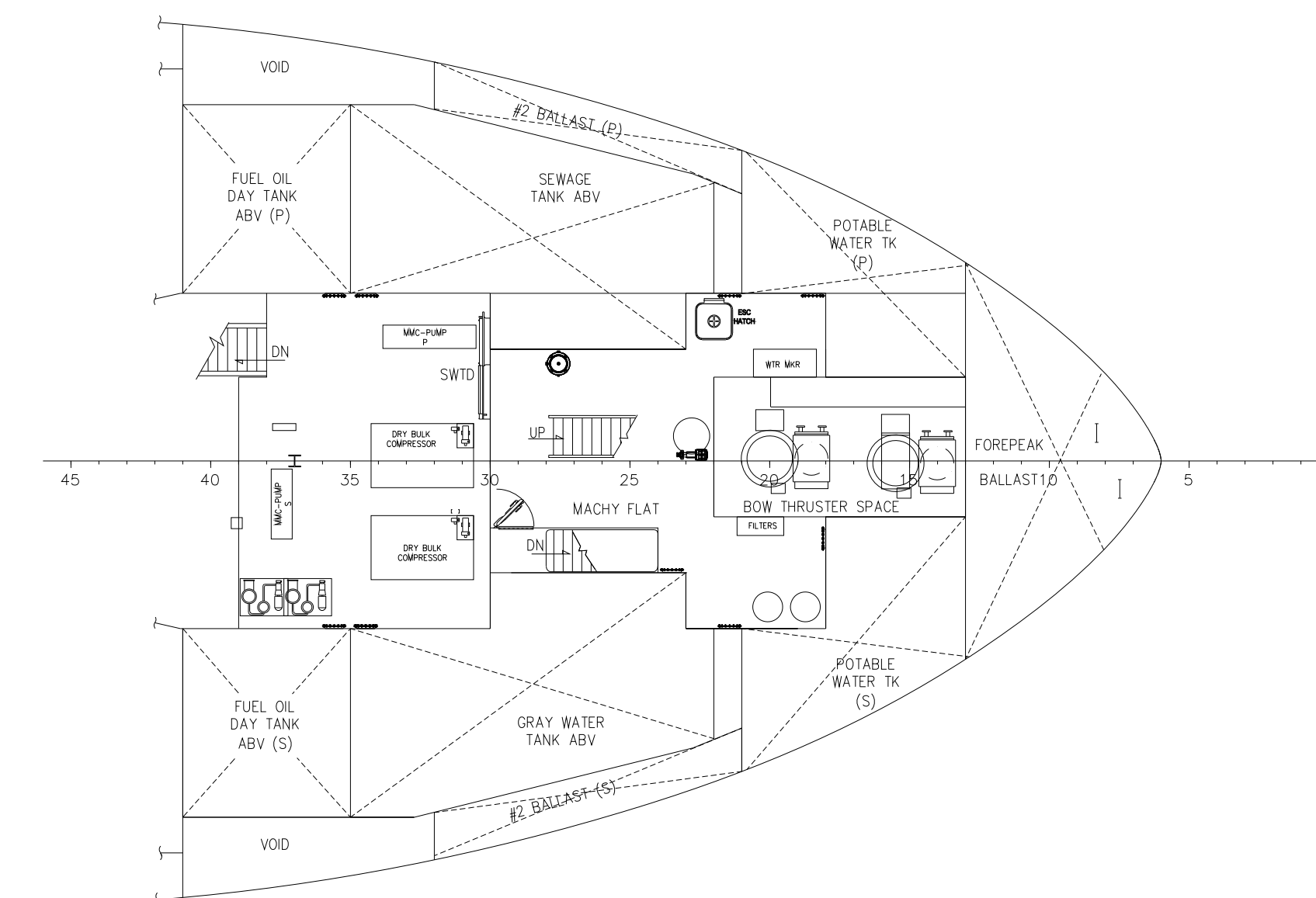
**HOLD PLAN**  
© GRATING LEVEL

**HOSMAX 300 FCSV**

 <small>THIS DRAWING, DESIGN CONCEPT AND SPECIFICATIONS ARE THE PROPERTY OF HORNBECK OFFSHORE SERVICES AND ARE FURNISHED ON A CONFIDENTIAL BASIS WITH AN EXPRESSED UNDERSTANDING THAT THEY WILL NOT BE COPIED, IN ANY MANNER USED FOR MANUFACTURE, SOLD, TRANSFERRED, NOR USED TO THE DETRIMENT OF SAID FIRM WITHOUT WRITTEN PERMISSION.</small>			
<b>HORNBECK OFFSHORE SERVICES</b>			
DRAWN BY:	SLD	292'-0" X 76'-0" X 24'-6"	
CHKD. BY:	KK	GENERAL ARRANGEMENT & OUTBOARD PROFILE	
APP'D. BY:		SCALE: 3/32"=1'-0"	DATE: 6/2/14
TASK #	6207 (TAI 1137H)	DRAWING #	1.001
		HULL #	204
		SHEET	2 OF 6
			6




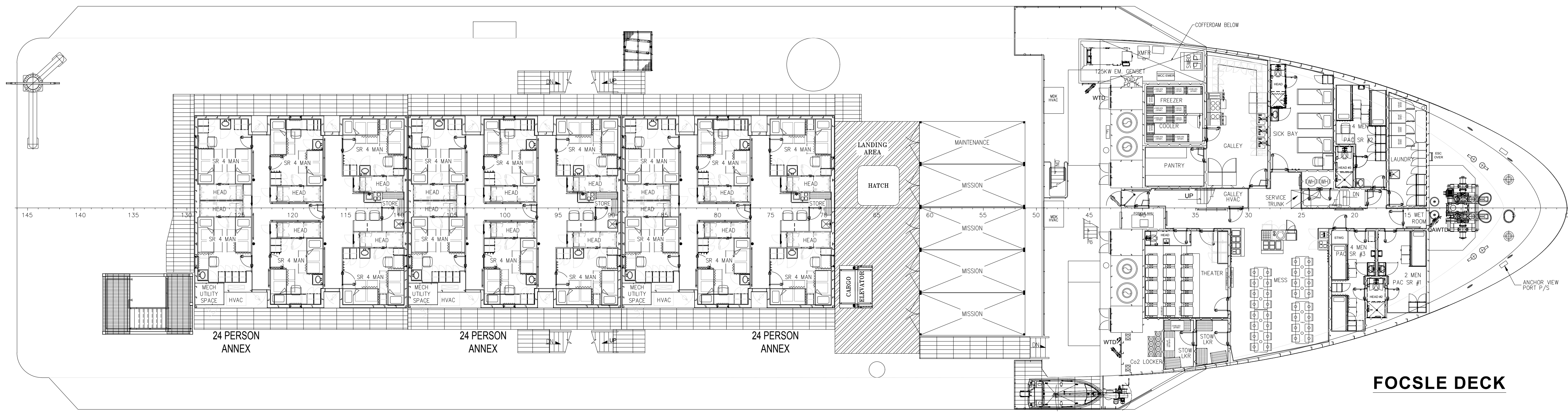
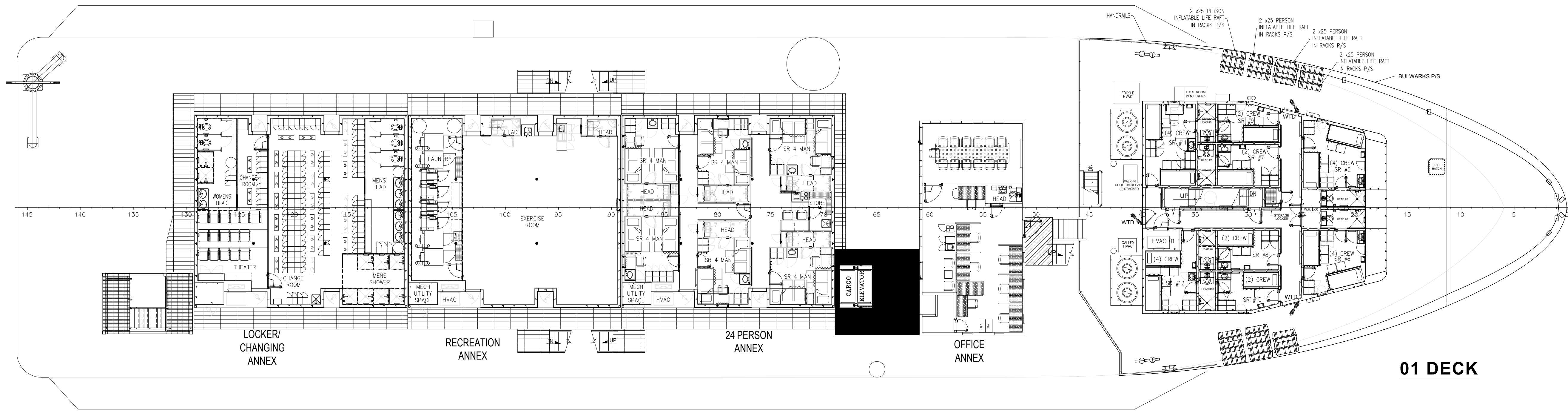
**MAIN DECK**




**MEZZANINE FLAT**

**HOSMAX 300 FCSV**

 <p>THIS DRAWING, DESIGN CONCEPT AND SPECIFICATIONS ARE THE PROPERTY OF HORNBECK OFFSHORE SERVICES AND ARE FURNISHED ON A CONFIDENTIAL BASIS WITH AN EXPRESSED UNDERSTANDING THAT THEY WILL NOT BE COPIED, IN ANY MANNER USED FOR MANUFACTURE, SOLD, TRANSFERRED, NOR USED TO THE DETRIMENT OF SAID FIRM WITHOUT WRITTEN PERMISSION.</p> <p><b>HORNBECK OFFSHORE SERVICES</b></p>			
DRAWN BY:	SLD	292'-0" X 76'-0" X 24'-6"	
CHK'D. BY:	KK	GENERAL ARRANGEMENT & OUTBOARD PROFILE	
APP'D. BY:		SCALE: 3/32"=1'-0"	DATE: 6/2/14
TASK #	6207 (TAI 1137H)	DRAWING #	1.001
		SHEET	3 OF 6
		REV.	6



**HOSMAX 300 FCSV**

 HORNBECK OFFSHORE SERVICES			
DRAWN BY: SLD	292'-0" X 76'-0" X 24'-6"		
CH'KD. BY: KK	GENERAL ARRANGEMENT & OUTBOARD PROFILE		
APP'D. BY:	SCALE: 3/32"=1'-0"	DATE: 6/2/14	REV. 6
TASK # 6207 (TAI 1137H)	DRAWING # 1.001	HULL # 204	SHEET 4 OF 6

40

39

38

37

36

35

34

33

D

D

C

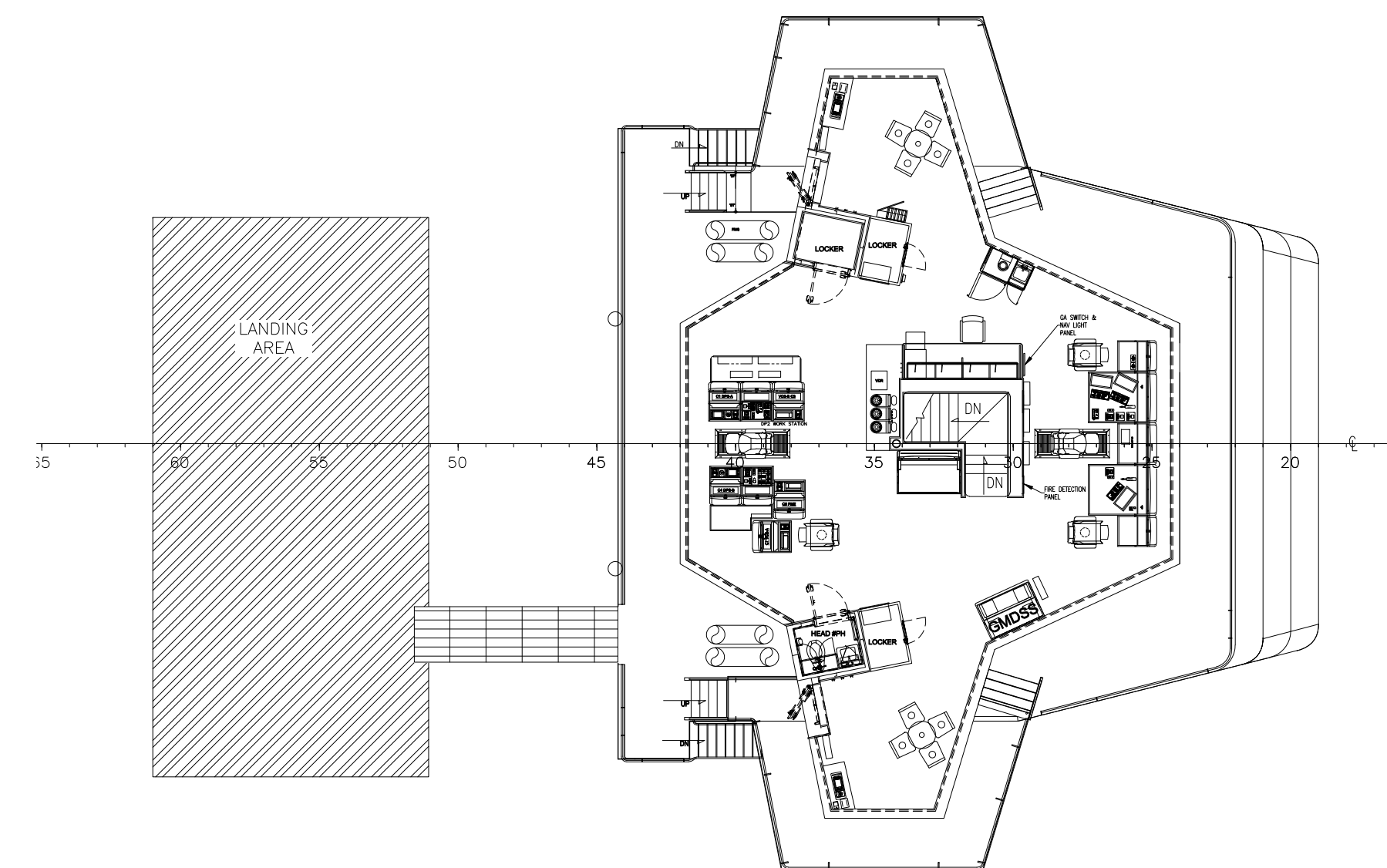
C

B

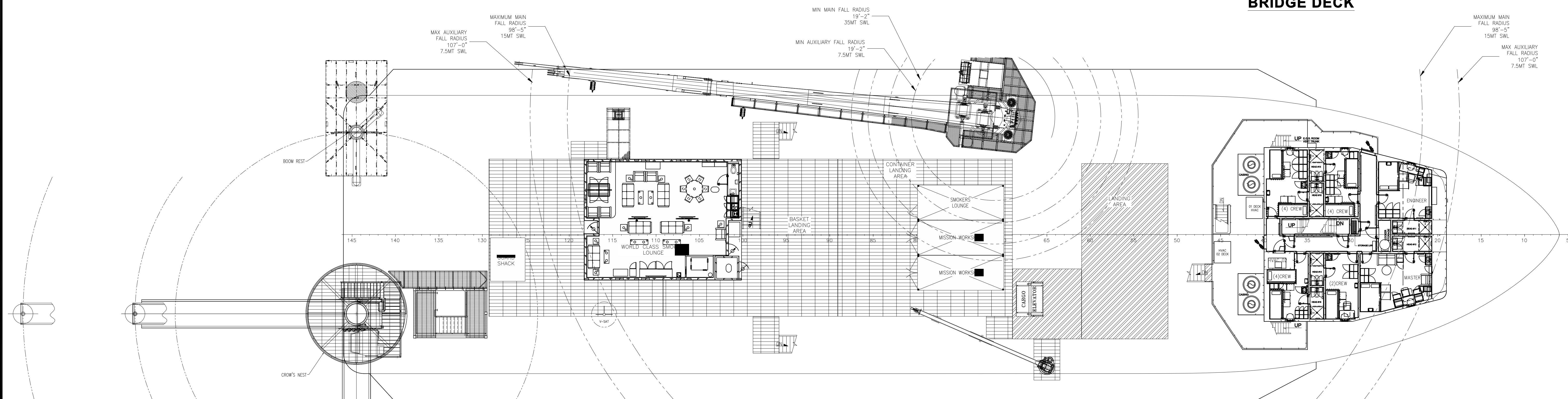
B

A

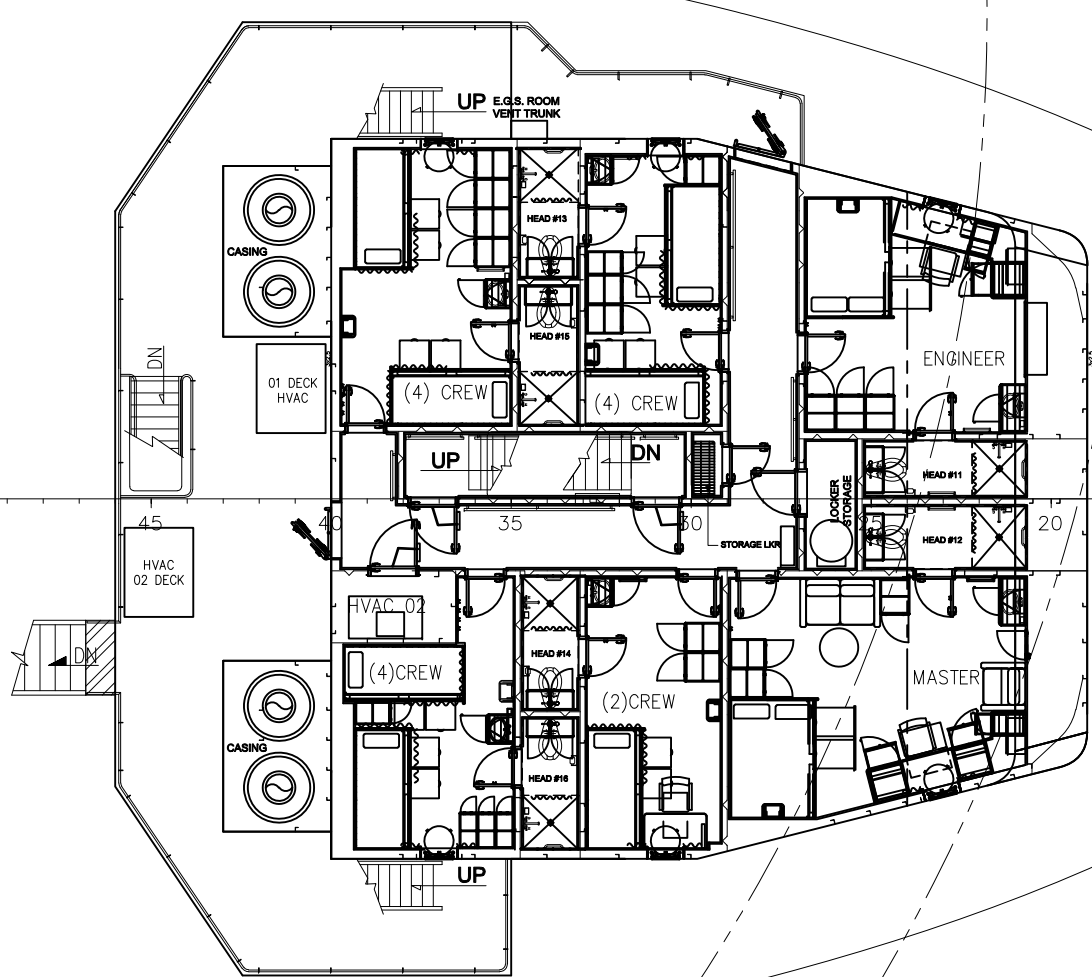
A



**BRIDGE DECK**




**TOP OF ANNEX UNITS**



**02 DECK**

**HOSMAX 300 FCSV**

 <small>THIS DRAWING, DESIGN CONCEPT AND SPECIFICATIONS ARE THE PROPERTY OF HORNBECK OFFSHORE SERVICES AND ARE FURNISHED ON A CONFIDENTIAL BASIS WITH AN EXPRESSED UNDERSTANDING THAT THEY WILL NOT BE COPIED IN ANY MANNER USED FOR MANUFACTURE, SOLD, TRANSFERRED, NOR USED TO THE DETRIMENT OF SAID FIRM WITHOUT WRITTEN PERMISSION.</small>			
<b>HORNBECK OFFSHORE SERVICES</b>			
DRAWN BY:	SLD	292'-0" X 76'-0" X 24'-6"	
CH'KD. BY:	K.K	GENERAL ARRANGEMENT & OUTBOARD PROFILE	
APP'D. BY:		SCALE: 3/32"=1'-0"	DATE: 6/2/14
TASK #	6207 (TAI 1137H)	DRAWING #	1.001
		HULL #	204
		SHEET	5 OF 6
		REV.	6

40

39

38

37

36

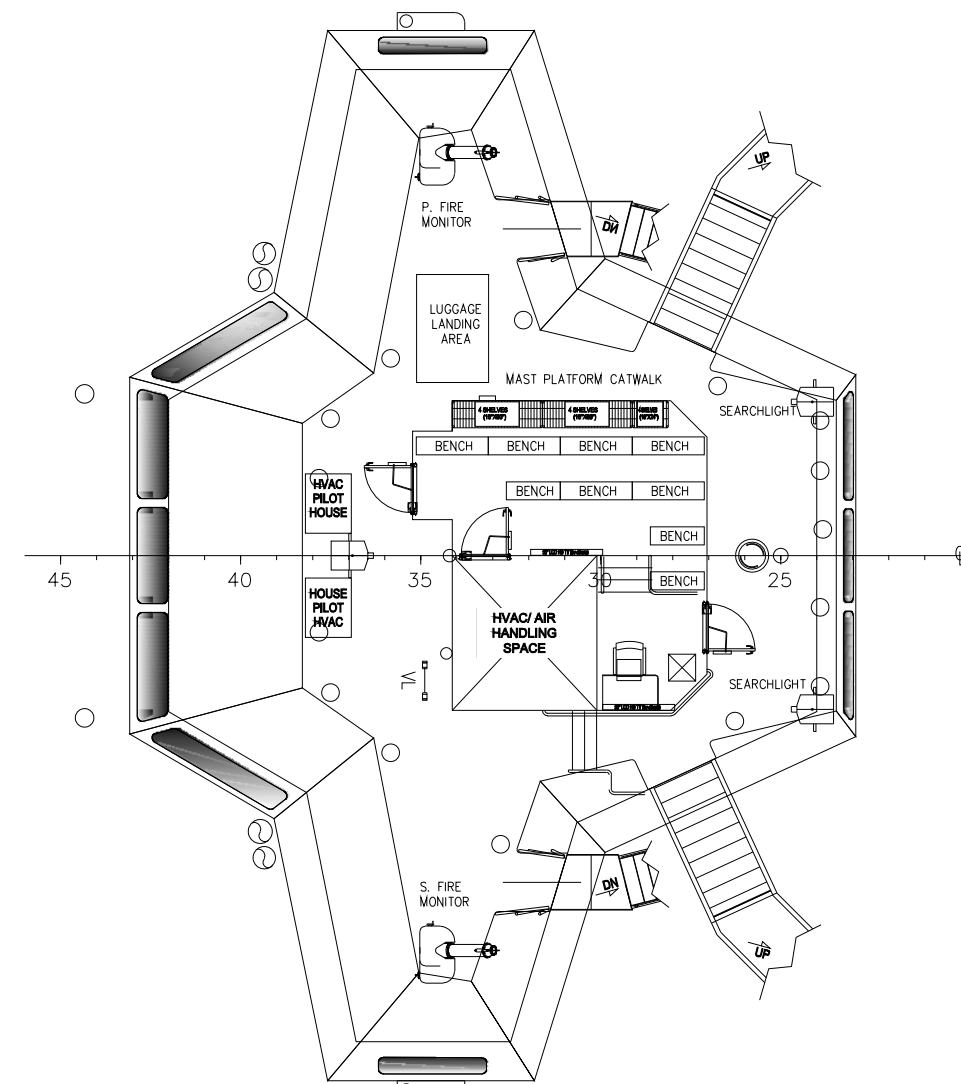
35

34

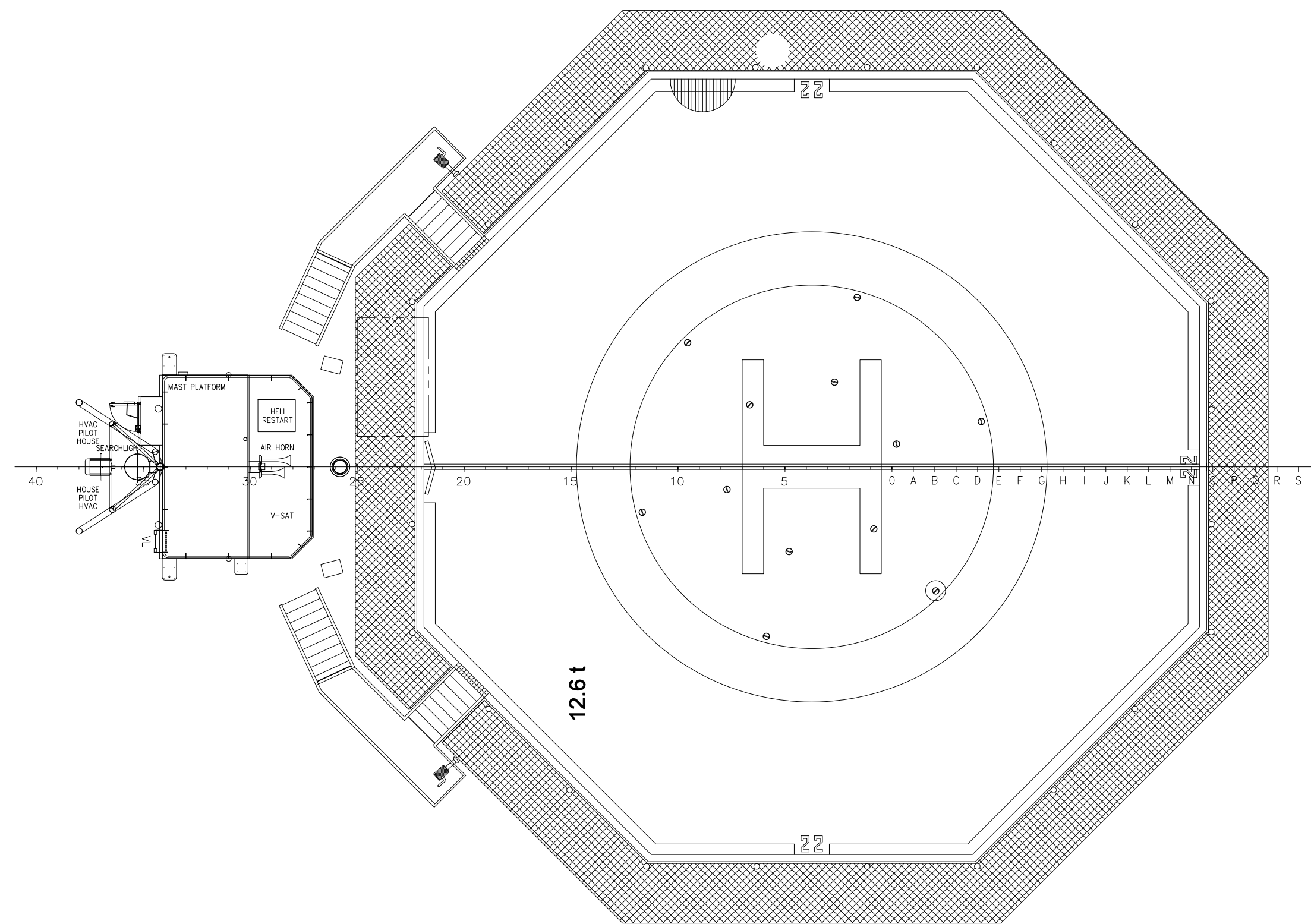
33

D  
C  
B  
A

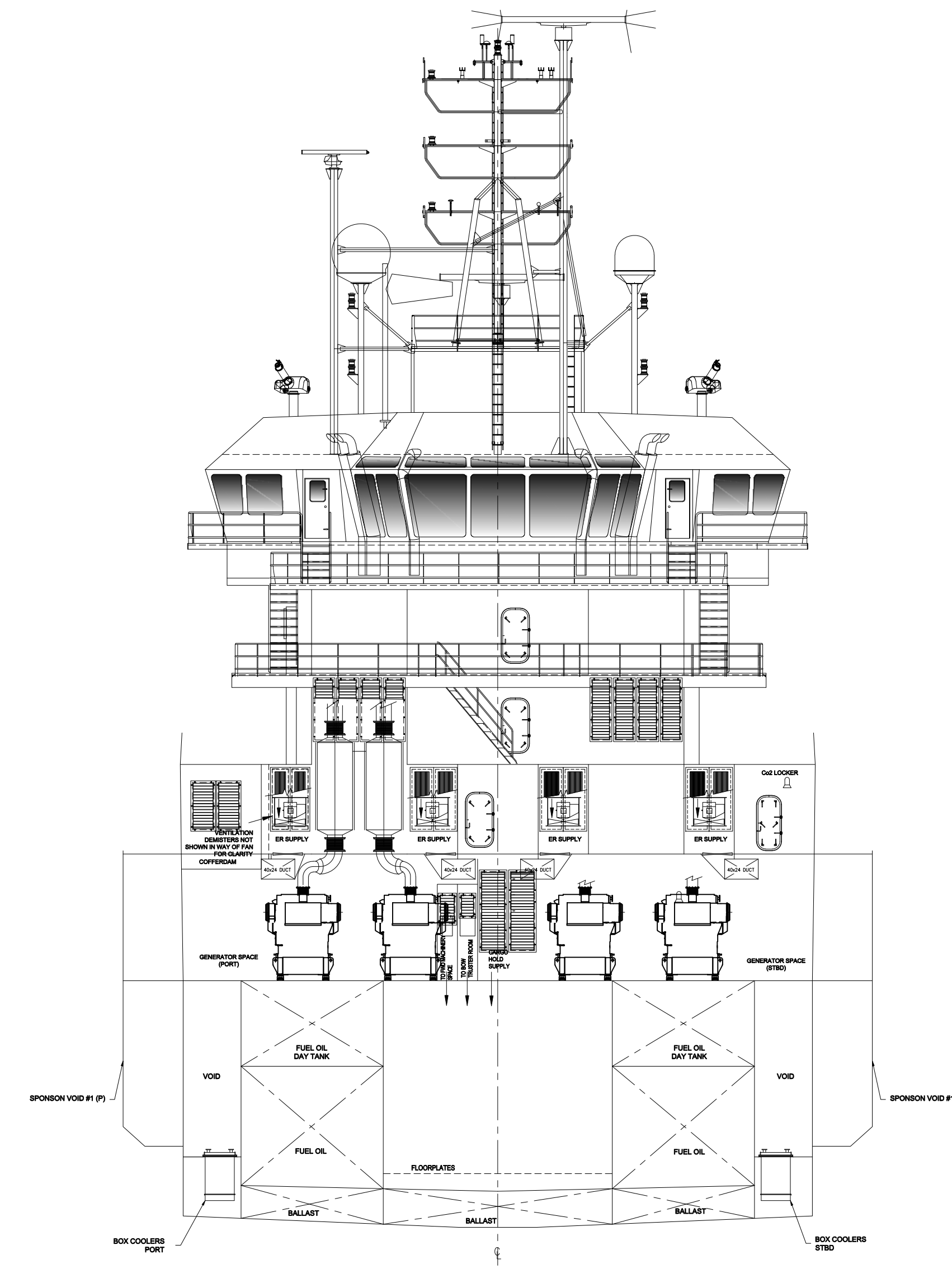
D  
C  
B  
A



**PILOTHOUSE  
TOP DECK**



**HELIDECK**



**SECTION ABOUT FR 41**  
LKG FWD

**HOSMAX 300 FCSV**

<p>HORNBECK OFFSHORE SERVICES</p>			
DRAWN BY: SLD	292'-0" X 76'-0" X 24'-6"		
CH'KD. BY: K.K	GENERAL ARRANGEMENT & OUTBOARD PROFILE		
APP'D. BY:	SCALE: 3/32"=1'-0"	DATE: 6/2/14	REV.
TASK # 6207 (TAI 1137H)	DRAWING # 1.001	HULL # 204	SHEET 6 OF 6
			6