

8 7 6 5 4 3 2 1

**GENERAL NOTES**

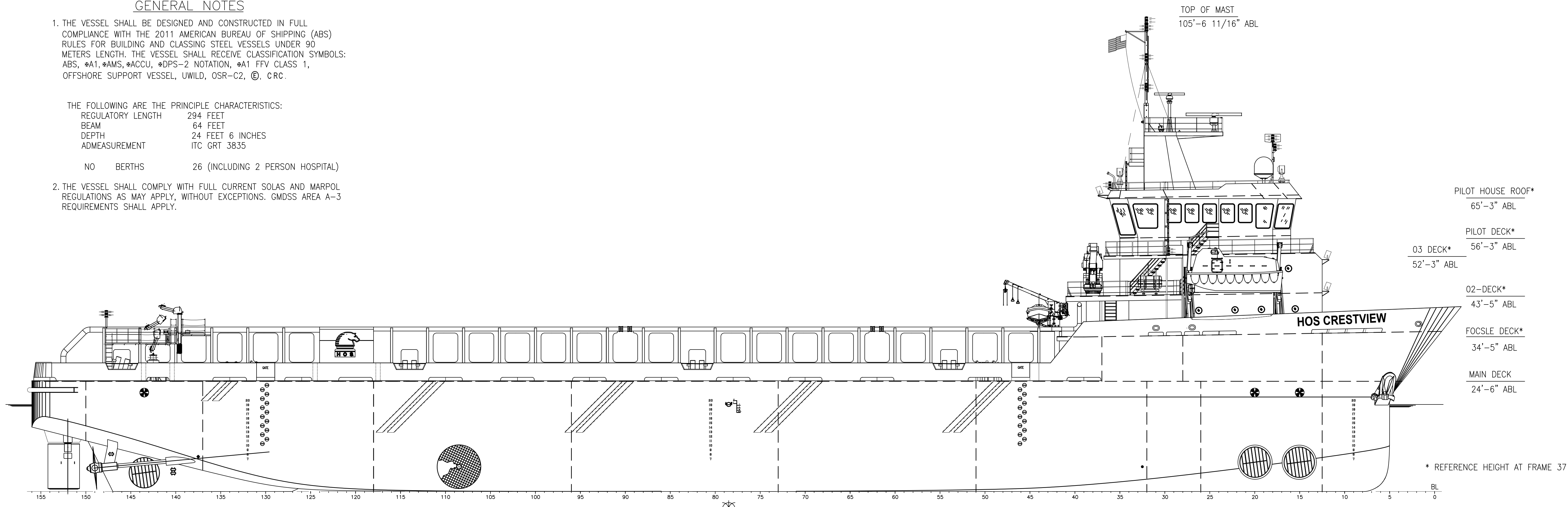
1. THE VESSEL SHALL BE DESIGNED AND CONSTRUCTED IN FULL COMPLIANCE WITH THE 2011 AMERICAN BUREAU OF SHIPPING (ABS) RULES FOR BUILDING AND CLASSING STEEL VESSELS UNDER 90 METERS LENGTH. THE VESSEL SHALL RECEIVE CLASSIFICATION SYMBOLS: ABS, \*A1, \*AMS, \*ACCU, \*DPS-2 NOTATION, \*A1 FFV CLASS 1, OFFSHORE SUPPORT VESSEL, UWILD, OSR-C2, ©, CRC.

THE FOLLOWING ARE THE PRINCIPLE CHARACTERISTICS:

REGULATORY LENGTH 294 FEET  
 BEAM 64 FEET  
 DEPTH 24 FEET 6 INCHES  
 ADMEASUREMENT ITC GRT 3835

NO BERTHS 26 (INCLUDING 2 PERSON HOSPITAL)

2. THE VESSEL SHALL COMPLY WITH FULL CURRENT SOLAS AND MARPOL REGULATIONS AS MAY APPLY, WITHOUT EXCEPTIONS. GMDSS AREA A-3 REQUIREMENTS SHALL APPLY.



**OUTBOARD PROFILE**

SCALE: 3/32"=1'-0"



**MAIN DECK**

SCALE: 3/32"=1'-0"

**HOSMAX 320 / HOS CRESTVIEW**

THIS DRAWING, DESIGN CONCEPT AND SPECIFICATIONS ARE THE PROPERTY OF HORNBECK OFFSHORE SERVICES AND ARE FURNISHED ON A CONFIDENTIAL BASIS WITH AN EXPRESSED UNDERSTANDING THAT THEY WILL NOT BE COPIED IN ANY MANNER USED FOR MANUFACTURE, SOLD, TRANSFERRED, NOR USED TO THE DETRIMENT OF SAID FIRM WITHOUT WRITTEN PERMISSION. 1005 ©

**HORNBECK OFFSHORE SERVICES**

DRAWN BY: A. RHODA	319'-6" X 64' X 24'-6"			SIZE D
CHECKED BY: M. STANSBURY	<b>OUTBOARD PROFILE &amp; GENERAL ARRANGEMENTS</b>			REV. 2
APPROVED BY: P. LUBRANO	TASK No. 7868	DRAWING No. 1.001	SCALE: AS NOTED DATE: 09/28/15	SHEET 1 OF 3

LAST SAVE/PRINT: 6/8/2023 12:44 PM  
 ENG: JSULLIVA  
 SHEET: ANSI D 22x34

8 7 6 5 4 3 2 1

16

15

14

13

12

11

10

9

D

D

C

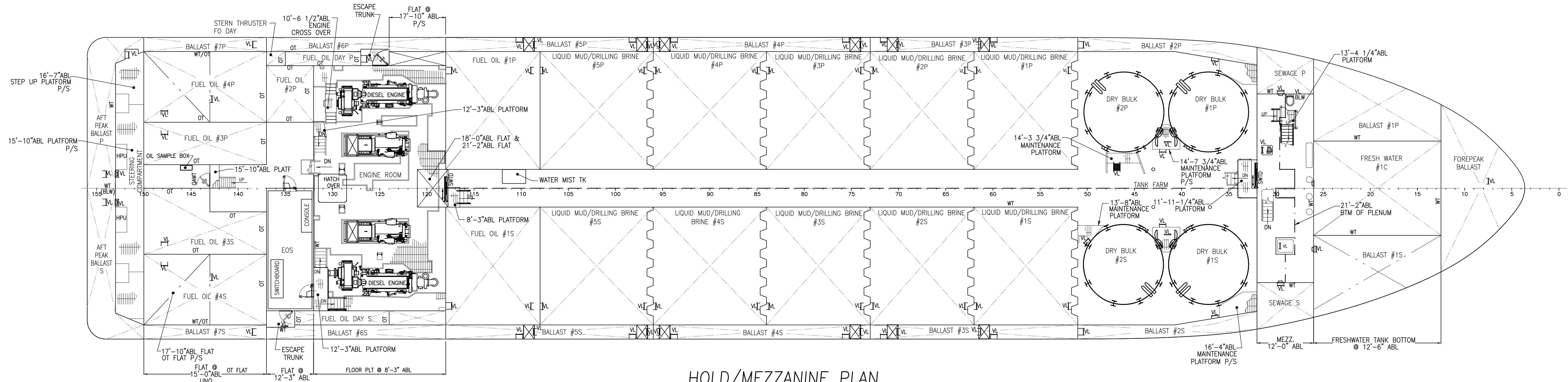
C

B

B

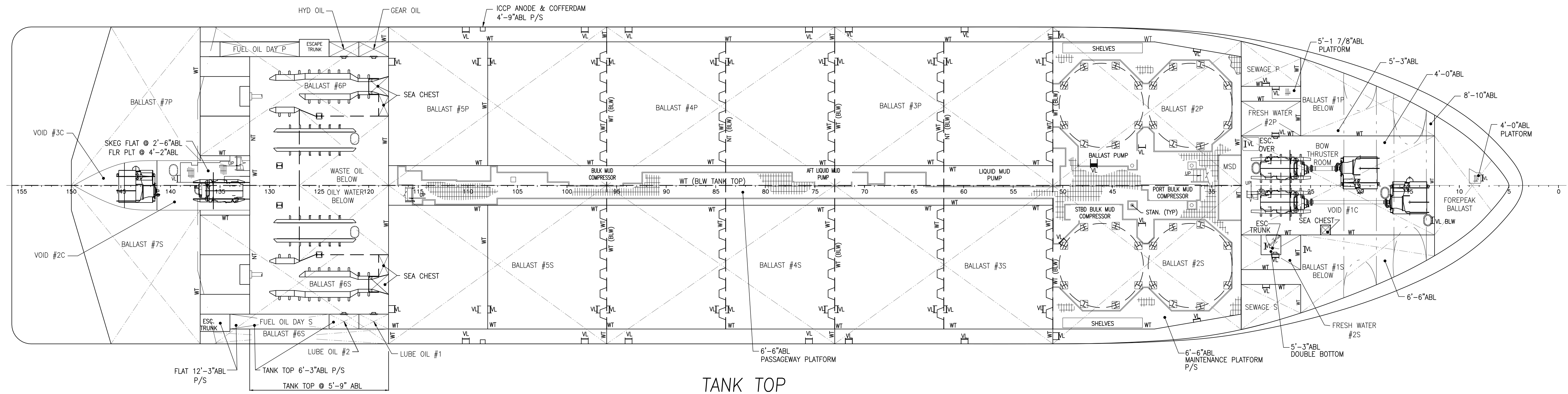
A

A



**HOLD/MEZZANINE PLAN**

SCALE: 3/32"=1'-0"



**TANK TOP**

SCALE: 3/32"=1'-0"



THIS DRAWING, DESIGN CONCEPT AND SPECIFICATIONS ARE THE PROPERTY OF HORNBECK OFFSHORE SERVICES AND ARE FURNISHED ON A CONFIDENTIAL BASIS WITH AN EXPRESSED UNDERSTANDING THAT THEY WILL NOT BE COPIED IN ANY MANNER USED FOR MANUFACTURE, SALE, TRANSFER, OR USED TO THE DETRIMENT OF SAID FIRM WITHOUT WRITTEN PERMISSION. HOS ©

**HORNBECK OFFSHORE SERVICES**

OUTBOARD PROFILE & GENERAL ARRANGEMENTS			SIZE D
TASK No. 7868	DRAWING No. 1.001	SCALE: AS NOTED	REV. 2
HULL No. 2014	SY: VTHM	DATE: 09/28/15	SHEET 2 OF 3

16

15

14

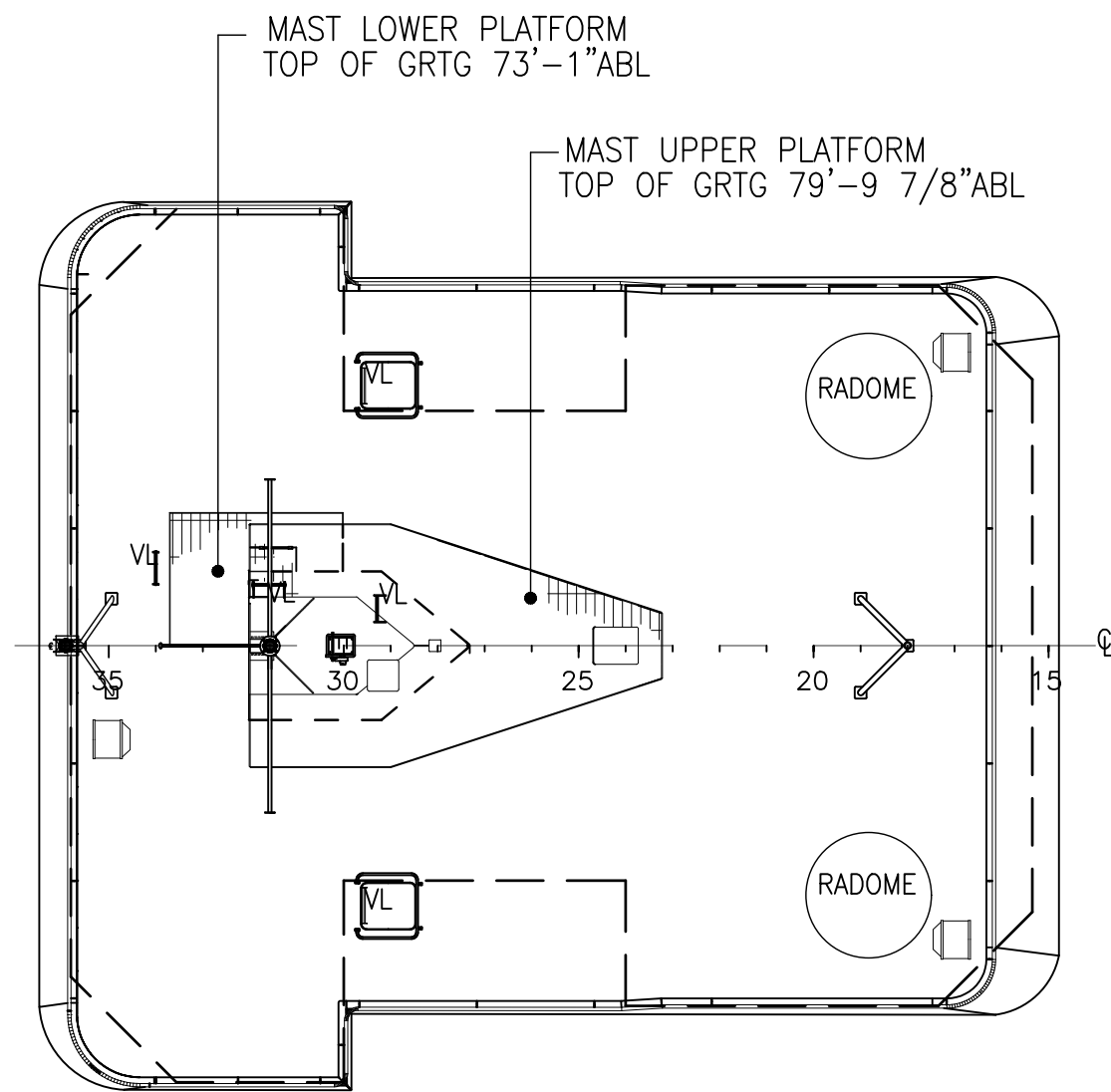
13

12

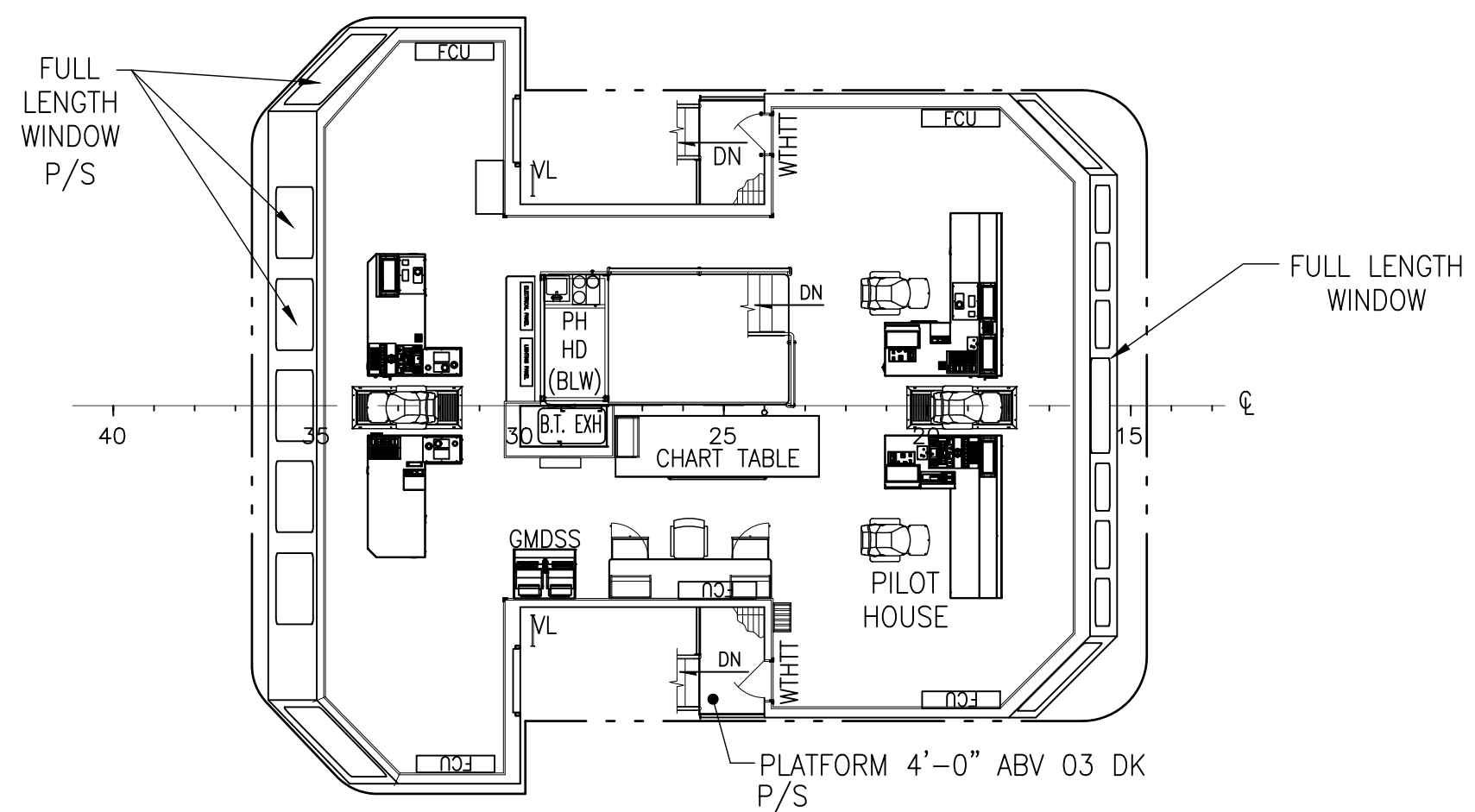
11

10

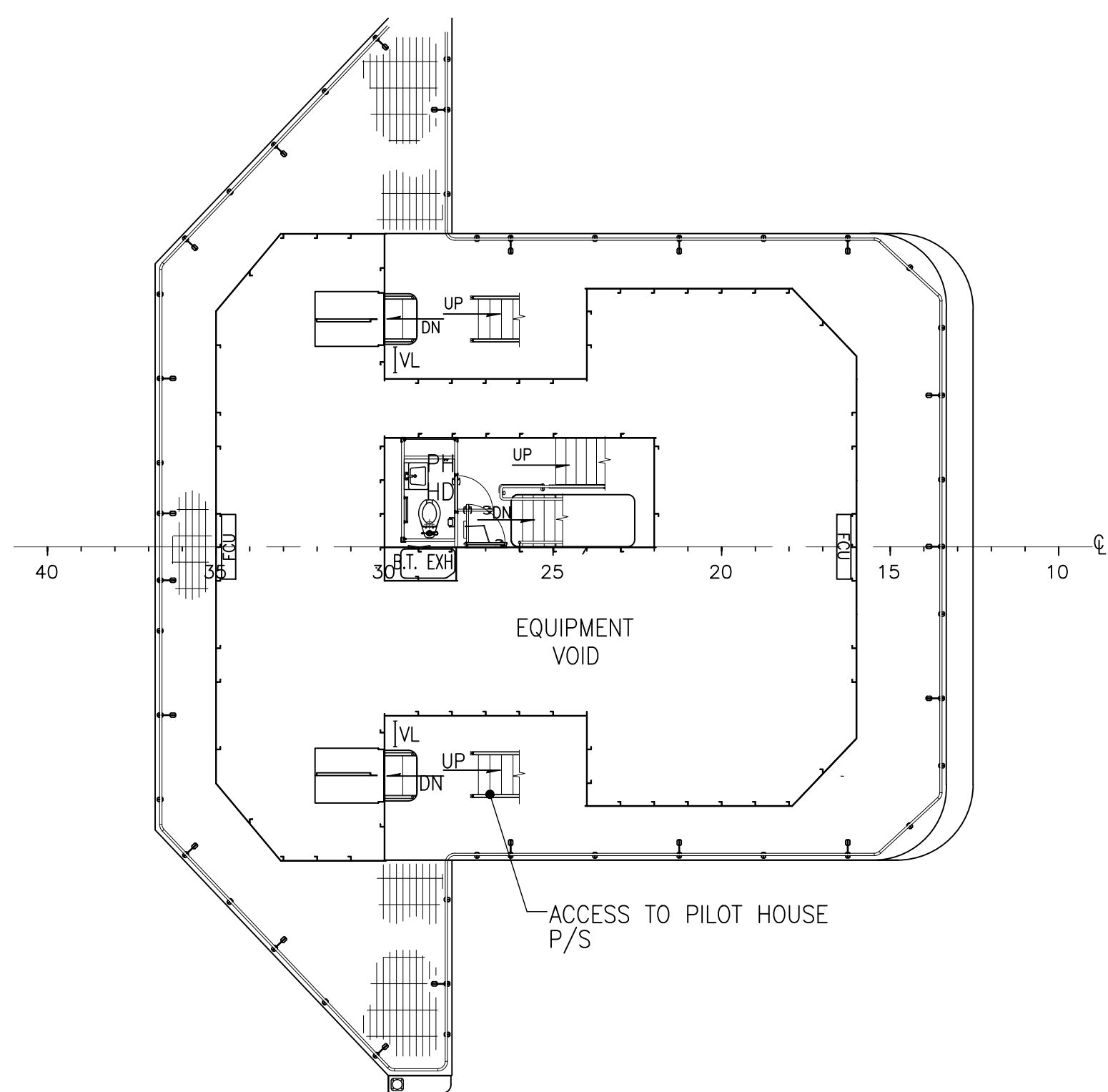
9



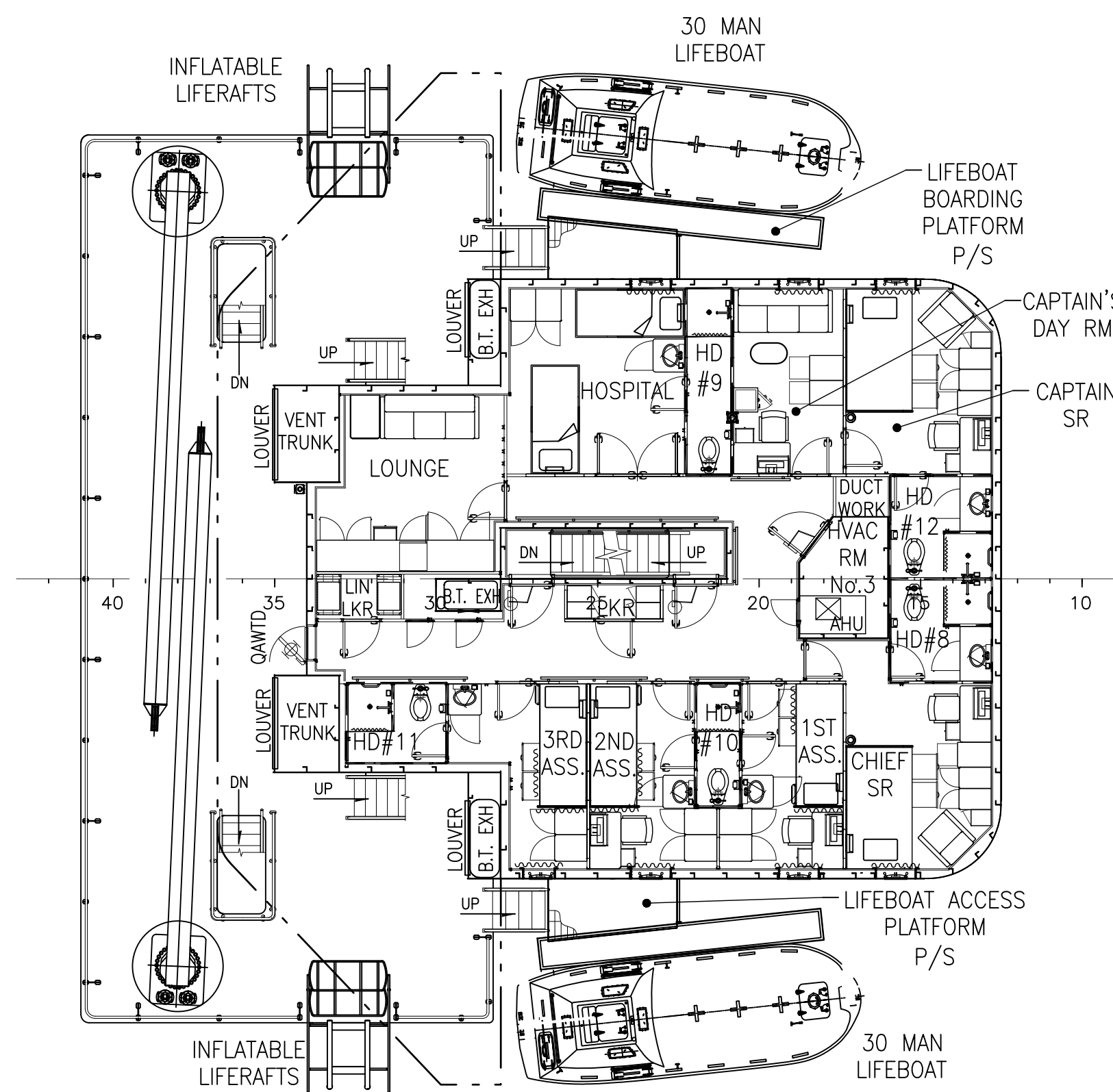
**PILOT HOUSE TOP**  
SCALE: 1/8"=1'-0"



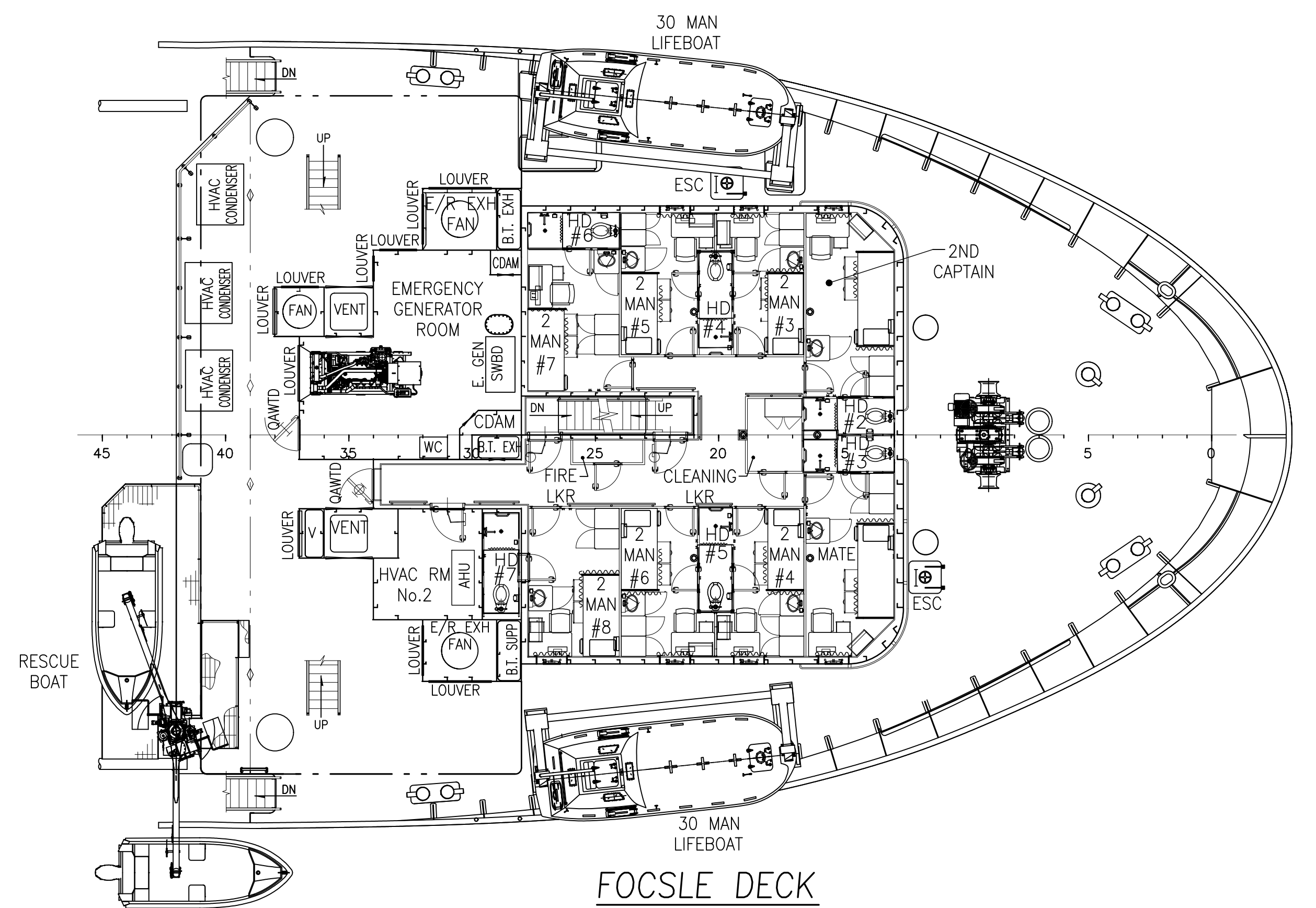
**PILOT HOUSE DECK**  
SCALE: 1/8"=1'-0"



**03 DECK**  
SCALE: 1/8"=1'-0"



**02 DECK**  
SCALE: 1/8"=1'-0"



**FOCLE DECK**  
SCALE: 1/8"=1'-0"