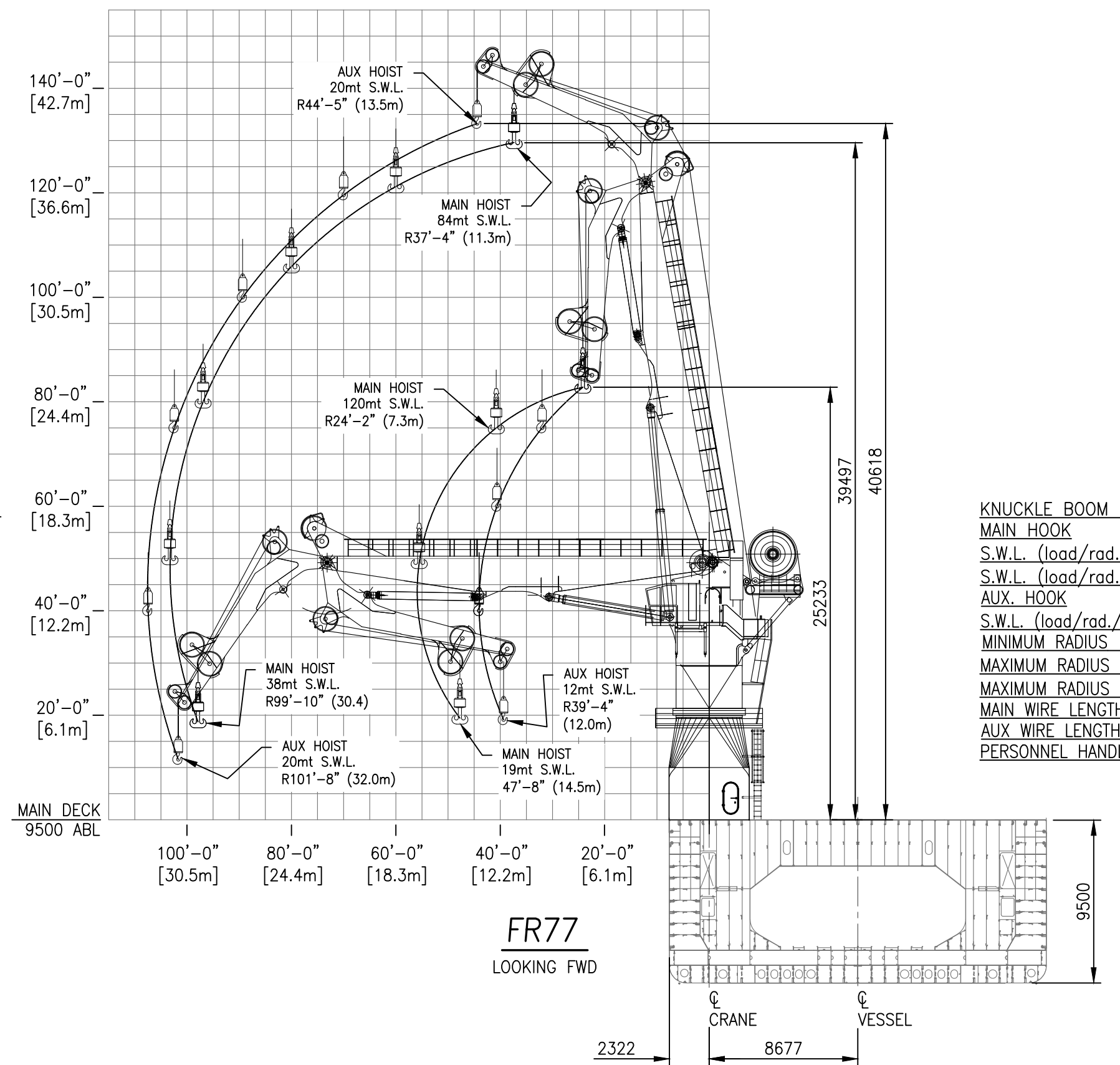


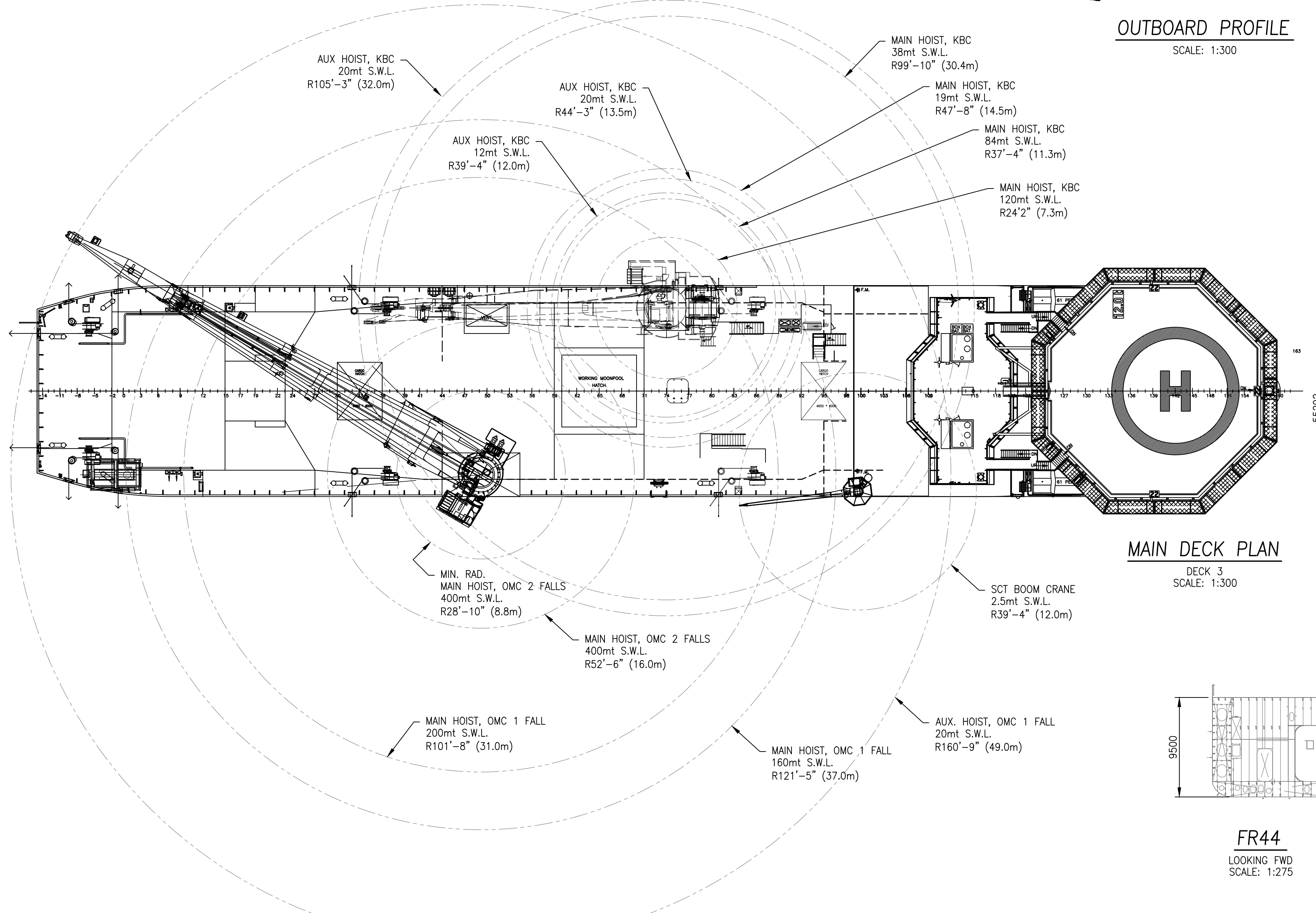
**OUTBOARD PROFILE**  
SCALE: 1:300



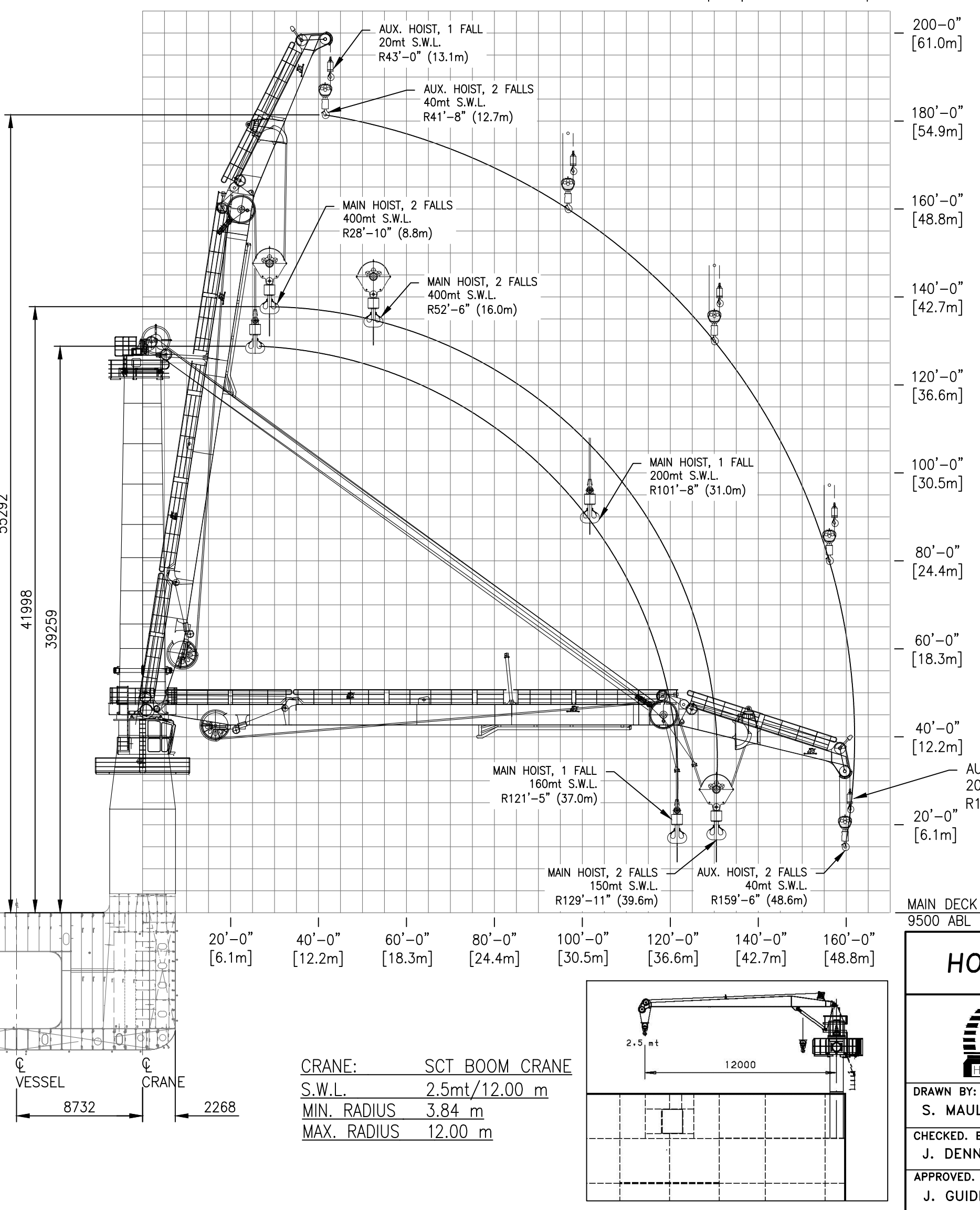
**KNUCKLE BOOM CRANE:** 120mt HUISMAN AHC KBC  
**MAIN HOOK**  
 S.W.L. (load/rad./speed) 120mt/15.10m/32m/min  
 S.W.L. (load/rad./speed) 38mt/30.42m/32m/min  
**AUX. HOOK**  
 S.W.L. (load/rad./speed) 20mt/7m/120m/min  
 MINIMUM RADIUS 7.40 m  
 MAXIMUM RADIUS (MAIN HOOK) 30.42 m  
 MAXIMUM RADIUS (AUX. HOOK) 32.09 m  
 MAIN WIRE LENGTH 528 m  
 AUX. WIRE LENGTH 1718 m  
 PERSONNEL HANDLING 2mt

WATER DEPTH (METERS)	LOAD (PRODUCTIVE)
100	98mt
200	96mt
300	94mt
400	93mt
528	91mt

BUOYANCY CONSIDERED IN LOAD



**MAIN DECK PLAN**  
DECK 3  
SCALE: 1:300



**PEDESTAL CRANE:** 400mt HUISMAN OMC  
**MAIN HOIST**  
 S.W.L. 2 FALLS (load/rad./speed) 400mt/8.8m/10.5m/min  
 S.W.L. 1 FALL (load/rad./speed) 200mt/31m/21m/min  
 S.W.L. 1 FALL (load/rad./speed) 160mt/37m/42m/min  
**AUX. HOIST**  
 S.W.L. 2 FALLS (load/rad./speed) 40mt/13.1m/35m/min  
 S.W.L. 1 FALL (load/rad./speed) 20mt/12.7m/70m/min  
 MINIMUM RADIUS 7.80 m  
 MAXIMUM RADIUS 49.00 m  
 WIRE LENGTH 3,048 m  
 PERSONNEL HANDLING 2mt

WATER DEPTH (METERS)	2 FALLS LOAD (PRODUCTIVE)	SINGLE LINE LOAD (PRODUCTIVE)
500	364mt	182mt
1000	329mt	164mt
1500	294mt	146mt
2000		123mt
2500		113mt
3000		93mt
3048		91mt

BUOYANCY CONSIDERED IN LOAD

**CRANE:** SCT BOOM CRANE  
 S.W.L. 2.5mt/12.00 m  
 MIN. RADIUS 3.84 m  
 MAX. RADIUS 12.00 m

**HOS 430 MPSV / HOS IRON HORSE**

THIS DRAWING, DESIGN CONCEPT AND SPECIFICATIONS ARE THE PROPERTY OF HORNBECK OFFSHORE SERVICES AND ARE FURNISHED ON A CONFIDENTIAL BASIS WITH AN EXPRESSED UNDERSTANDING THAT THEY WILL NOT BE COPIED, IN ANY MANNER, USED FOR MANUFACTURE, SOLD, TRANSFERRED, NOR USED TO THE DETRIMENT OF SAID FIRM WITHOUT WRITTEN PERMISSION.

**HORNBECK OFFSHORE SERVICES**

DRAWN BY: S. MAUL  
 CHECKED BY: J. DENNIS  
 APPROVED BY: J. GUIDRY

**432'-1" X 72'-1" X 31'-2"**

**CRANE ARRANGEMENT**

TASK No. 8106  
 HULL No. 717

DRAWING No. 6,805  
 SY: IHC

SCALE: NOTED/METRIC  
 DATE: 10/09/18  
 SHEET 1 OF 1

SIZE D/M  
 REV. 11